

**Full Planet, Empty Plates**  
**Supporting Data for Chapter 5: Eroding Soils Darkening Our Future**

[Dust Events in South Korea, 1970-2011](#)

GRAPH: Dust Events in South Korea, 1970-2011

[Grain Production, Area, Yields, Consumption, and Imports in Kazakhstan, 1987-2011](#)

GRAPH: Grain Production in Kazakhstan, 1987-2011

GRAPH: Grain Area Harvested in Kazakhstan, 1987-2011

GRAPH: Grain Yields in Kazakhstan, 1987-2011

GRAPH: Grain Consumption and Imports in Kazakhstan, 1987-2011

[Grain Production, Area, Yields, Consumption, and Imports in Lesotho, 1960-2011](#)

GRAPH: Grain Production in Lesotho, 1960-2011

GRAPH: Grain Area Harvested in Lesotho, 1960-2011

GRAPH: Grain Yields in Lesotho, 1960-2011

GRAPH: Grain Consumption and Imports in Lesotho, 1960-2011

[Grain Production, Area, Yields, Consumption, and Imports in Haiti, 1960-2011](#)

GRAPH: Grain Production in Haiti, 1960-2011

GRAPH: Grain Area Harvested in Haiti, 1960-2011

GRAPH: Grain Yields in Haiti, 1960-2011

GRAPH: Grain Consumption and Imports in Haiti, 1960-2011

[Grain Production, Area, Yields, Consumption, and Imports in Mongolia, 1961-2011](#)

GRAPH: Grain Production in Mongolia, 1961-2011

GRAPH: Grain Area Harvested in Mongolia, 1961-2011

GRAPH: Grain Yields in Mongolia, 1961-2011

GRAPH: Grain Consumption and Imports in Mongolia, 1961-2011

[Grain Production, Area, Yields, Consumption, and Imports in North Korea, 1960-2011](#)

GRAPH: Grain Production in North Korea, 1960-2011

GRAPH: Grain Area Harvested in North Korea, 1960-2011

GRAPH: Grain Yields in North Korea, 1960-2011

GRAPH: Grain Consumption and Imports in North Korea, 1960-2011

[World Grazing Livestock by Type, 1961-2010](#)

GRAPH: World Grazing Livestock by Type, 1961-2010

[Grazing Livestock in Africa, 1961-2010](#)

GRAPH: Grazing Livestock in Africa, 1961-2010

[Grazing Livestock in Bangladesh, 1961-2010](#)

GRAPH: Grazing Livestock in Bangladesh, 1961-2010

[Grazing Livestock in China, 1961-2010](#)

GRAPH: Grazing Livestock in China, 1961-2010

[Grazing Livestock in Iran, 1961-2010](#)

GRAPH: Grazing Livestock in Iran, 1961-2010

[Grazing Livestock in Mali, 1961-2010](#)

GRAPH: Grazing Livestock in Mali, 1961-2010

[Grazing Livestock in Nigeria, 1961-2010](#)

GRAPH: Grazing Livestock in Nigeria, 1961-2010

[Grazing Livestock in Pakistan, 1961-2010](#)

GRAPH: Grazing Livestock in Pakistan, 1961-2010

[Grazing Livestock in the United States, 1961-2010](#)

GRAPH: Grazing Livestock in the United States, 1961-2010

[Livestock and Human Populations in Africa, 1961-2010](#)

GRAPH: Livestock and Human Populations in Africa, 1961-2010

[Livestock and Human Populations in Nigeria, 1961-2010](#)

GRAPH: Livestock and Human Populations in Nigeria, 1961-2010

[Livestock and Human Populations in Pakistan, 1961-2010](#)

GRAPH: Livestock and Human Populations in Pakistan, 1961-2010

A full listing of data for the entire book is on-line at:

[http://www.earth-policy.org/books/fpep/fpep\\_data](http://www.earth-policy.org/books/fpep/fpep_data)

This is part of a supporting dataset for Lester R. Brown, **Full Planet, Empty Plates: The New Geopolitics of Food Scarcity** (New York: W.W. Norton & Company, 2012). For more information, see Earth Policy Institute on-line at [www.earth-policy.org](http://www.earth-policy.org).

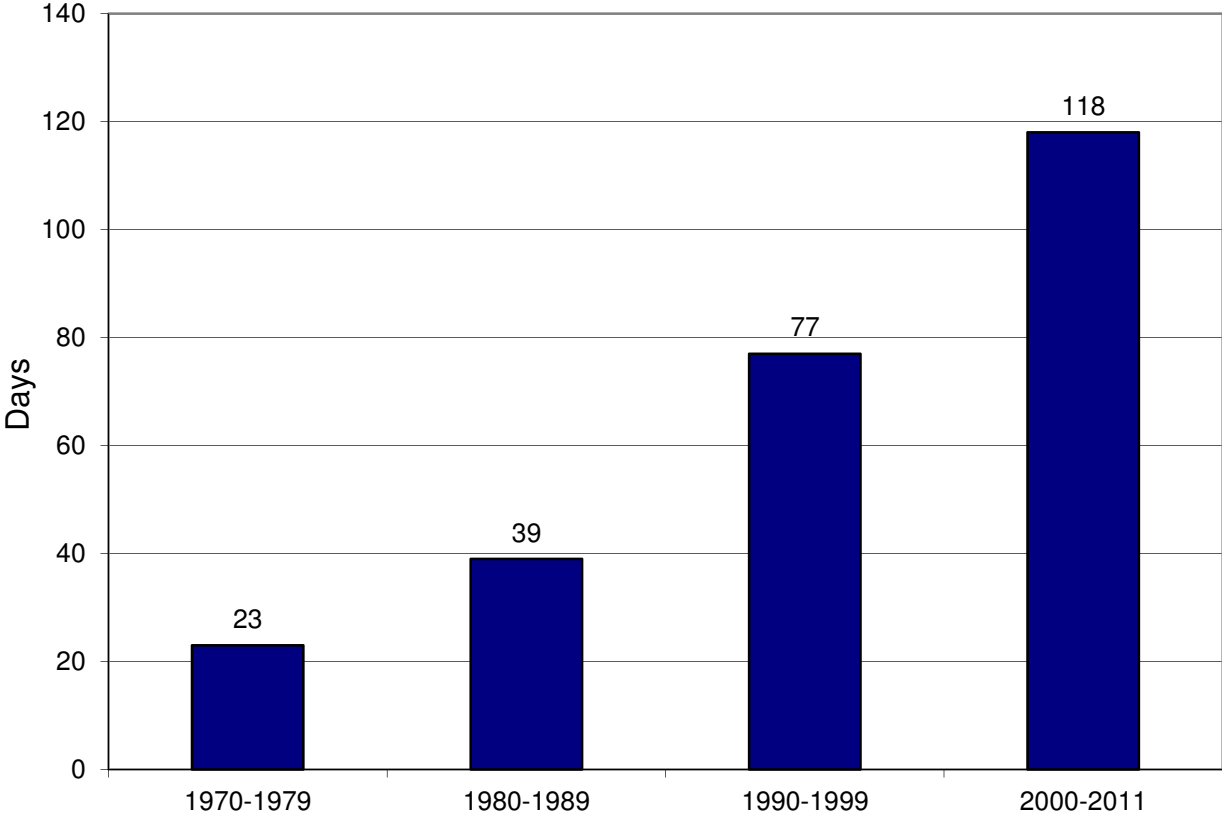
## Dust Events in South Korea, 1970-2011

Period	Dust Events Days
1970-1979	23
1980-1989	39
1990-1999	77
2000-2011	118

Source: Compiled by Earth Policy Institute with data for 1970-1979 from Korean Meteorological Administration cited in Dennis Normile, "Getting at the Roots of Killer Dust Storms," *Science*, vol. 317, no. 5836 (20 July 2007), pp. 314–16; and with 1980-2011 from Korean Ministry of Environment, cited in Lee Eun-joo and Kang Chan-su, "Yellow Dust Season to be Longer, More Severe," *Korea JoongAng Daily*, 2 April 2012.

This is part of a supporting dataset for Lester R. Brown, **Full Planet, Empty Plates: The New Geopolitics of Food Scarcity** (New York: W.W. Norton & Company, 2012). For more information, see Earth Policy Institute on-line at [www.earth-policy.org](http://www.earth-policy.org).

### Dust Events in South Korea, 1970-2011



Source: KMA; KME

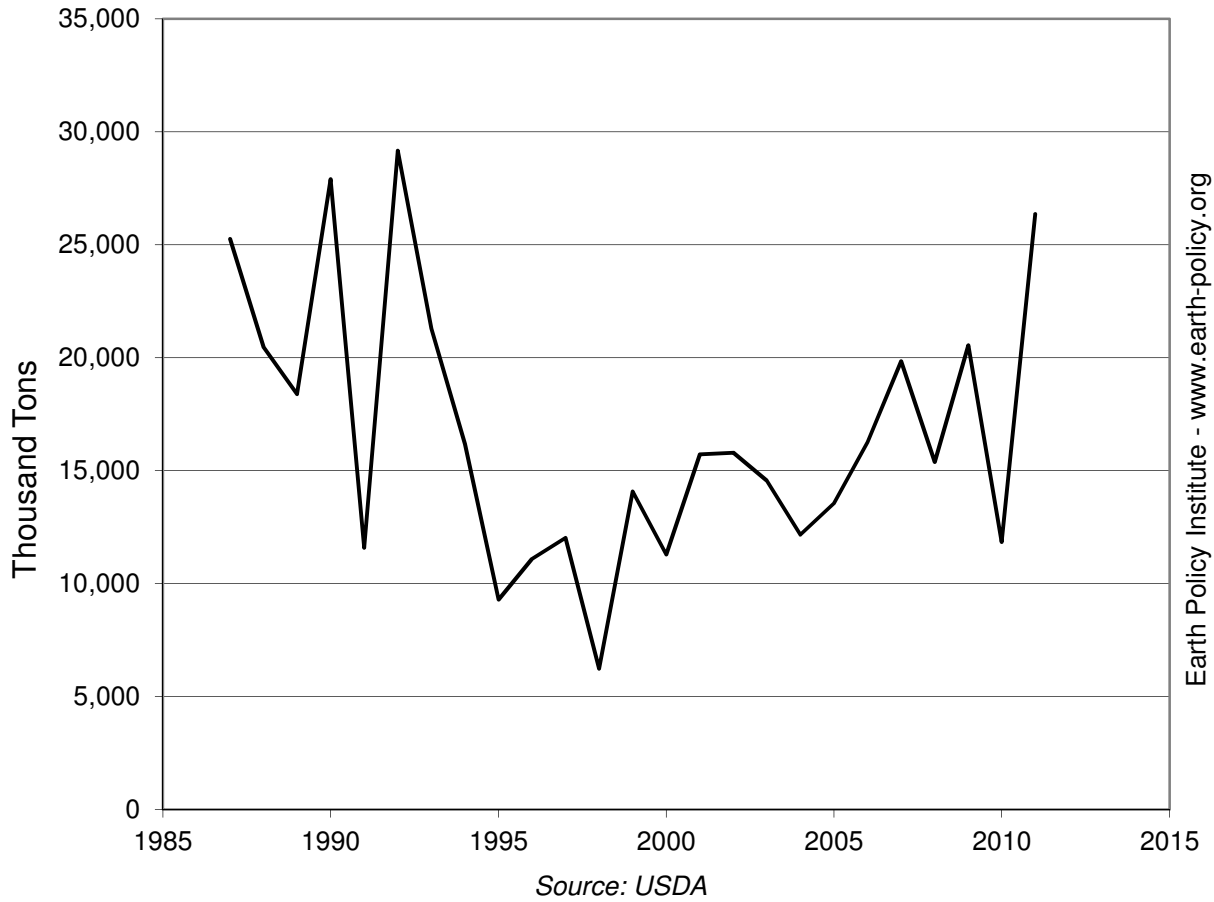
### Grain Production, Area, Yields, Consumption, and Imports in Kazakhstan, 1987-2011

Year	Production Thousand Tons	Area Harvested Thousand Hectares	Yield Tons per Hectare	Consumption Thousand Tons	Imports
1987	25,254	24,083	1.05	16,895	415
1988	20,451	23,837	0.86	16,025	795
1989	18,388	23,335	0.79	15,655	1,025
1990	27,908	22,915	1.22	18,241	365
1991	11,589	22,230	0.52	14,091	995
1992	29,167	21,924	1.33	16,923	403
1993	21,294	21,665	0.98	15,853	33
1994	16,182	20,247	0.80	13,003	6
1995	9,295	18,432	0.50	7,867	57
1996	11,087	16,795	0.66	7,653	20
1997	12,027	15,253	0.79	7,293	21
1998	6,238	11,338	0.55	5,106	20
1999	14,087	11,133	1.27	5,818	11
2000	11,284	12,155	0.93	6,130	35
2001	15,725	13,101	1.20	8,037	70
2002	15,801	13,933	1.13	9,179	66
2003	14,568	13,733	1.06	9,452	64
2004	12,163	14,103	0.86	9,502	93
2005	13,553	14,676	0.92	9,635	91
2006	16,261	14,671	1.11	9,692	121
2007	19,848	15,216	1.30	10,415	95
2008	15,388	16,048	0.96	10,174	259
2009	20,551	17,049	1.21	10,515	87
2010	11,848	16,294	0.73	8,507	65
2011	26,361	15,802	1.67	11,688	45

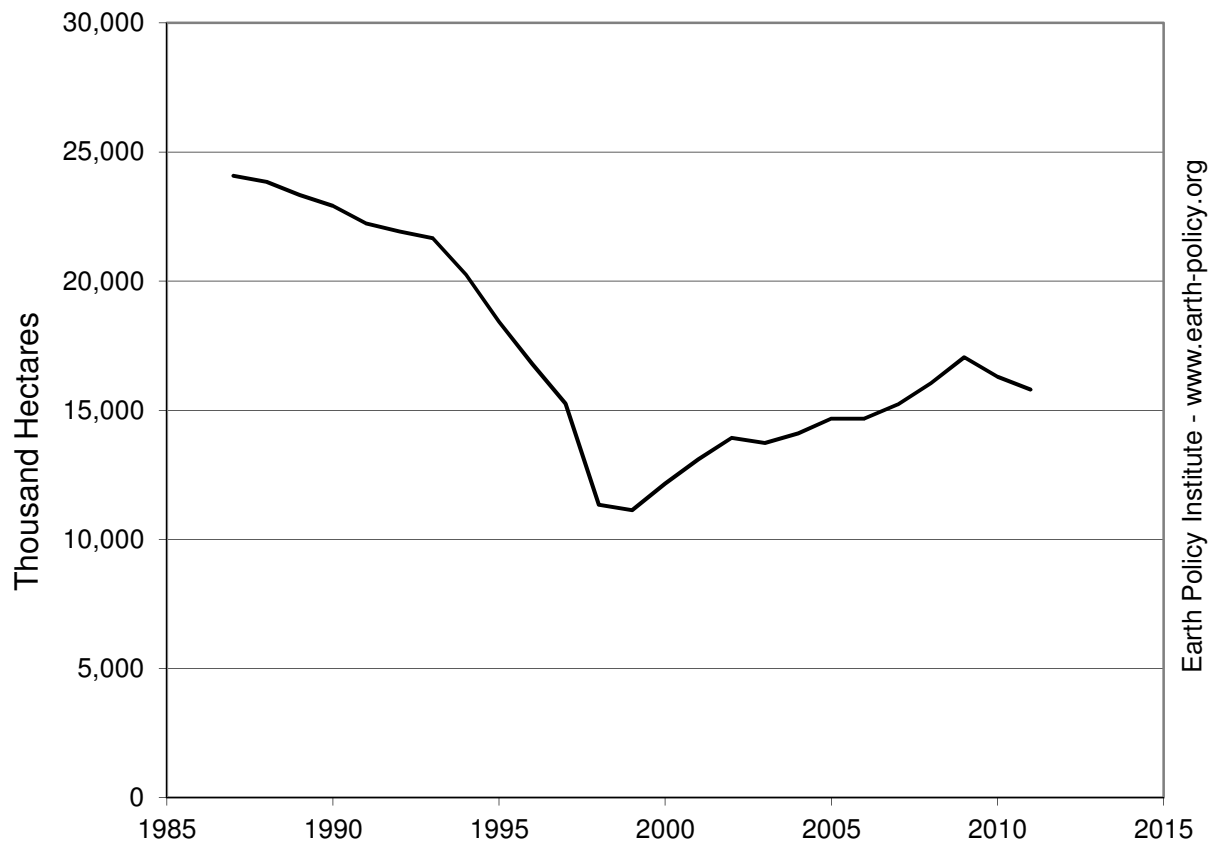
Source: Compiled by Earth Policy Institute from U.S. Department of Agriculture, *Production, Supply and Distribution*, electronic database, at [www.fas.usda.gov/psdonline](http://www.fas.usda.gov/psdonline), updated 10 April 2012.

This is part of a supporting dataset for Lester R. Brown, **Full Planet, Empty Plates: The New Geopolitics of Food Scarcity** (New York: W.W. Norton & Company, 2012). For more information, see Earth Policy Institute online at [www.earth-policy.org](http://www.earth-policy.org).

Grain Production in Kazakhstan, 1987-2011

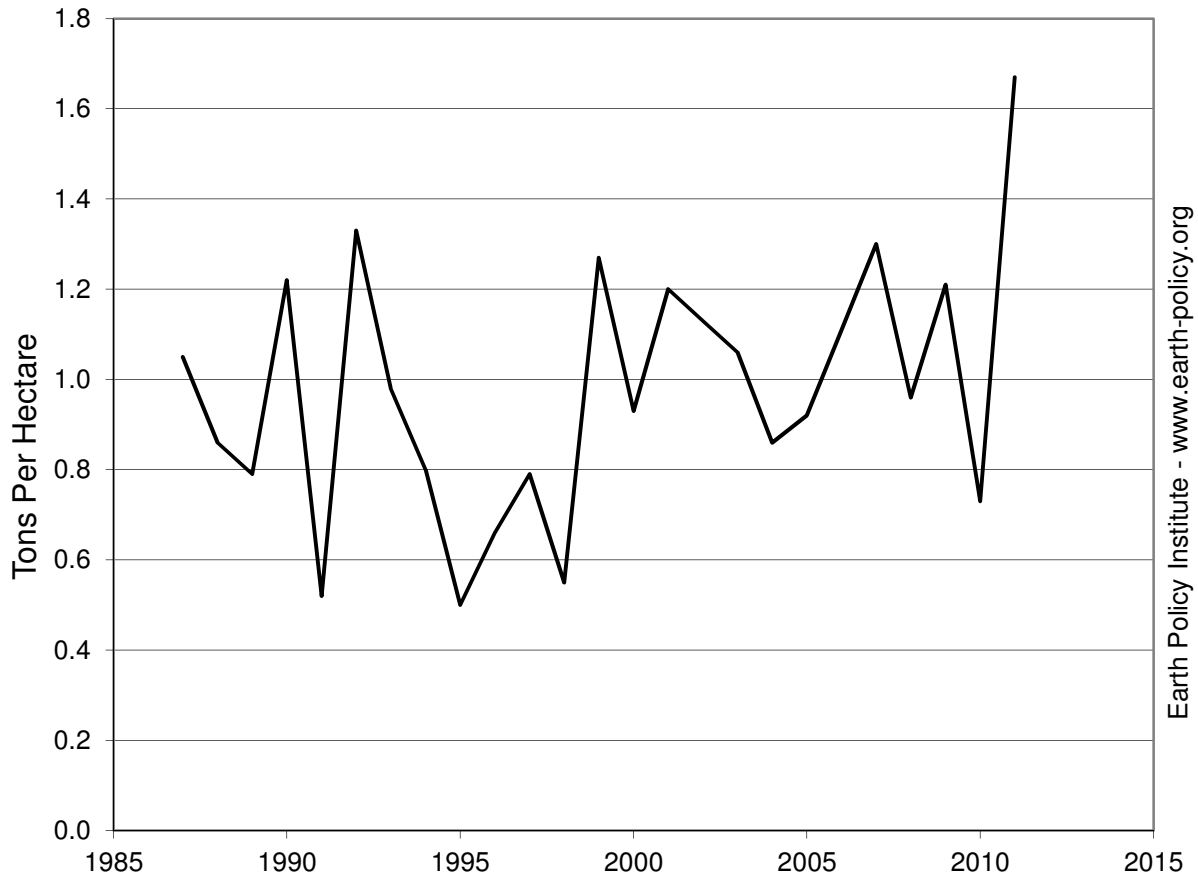


Grain Area Harvested in Kazakhstan, 1987-2011



Source: USDA

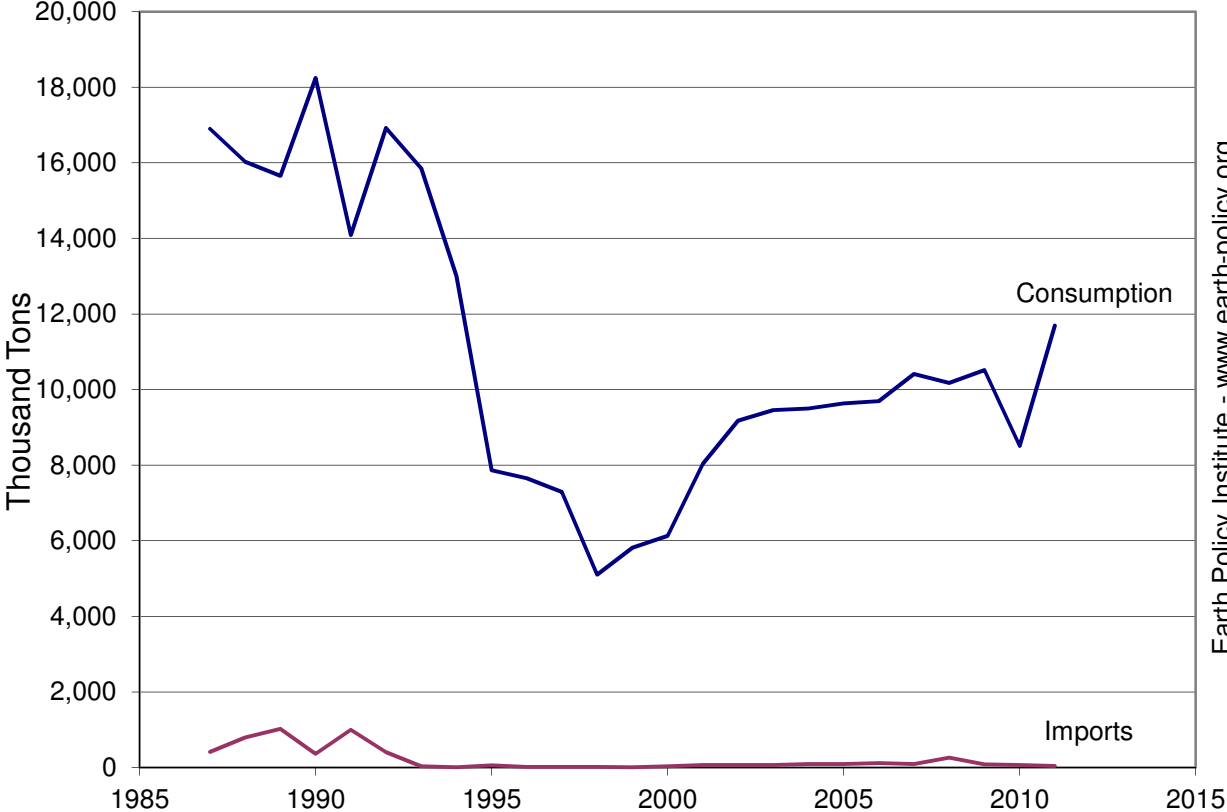
Grain Yields in Kazakhstan, 1987-2011



Source: USDA

Earth Policy Institute - [www.earth-policy.org](http://www.earth-policy.org)

### Grain Consumption and Imports in Kazakhstan, 1987-2011



Source: USDA



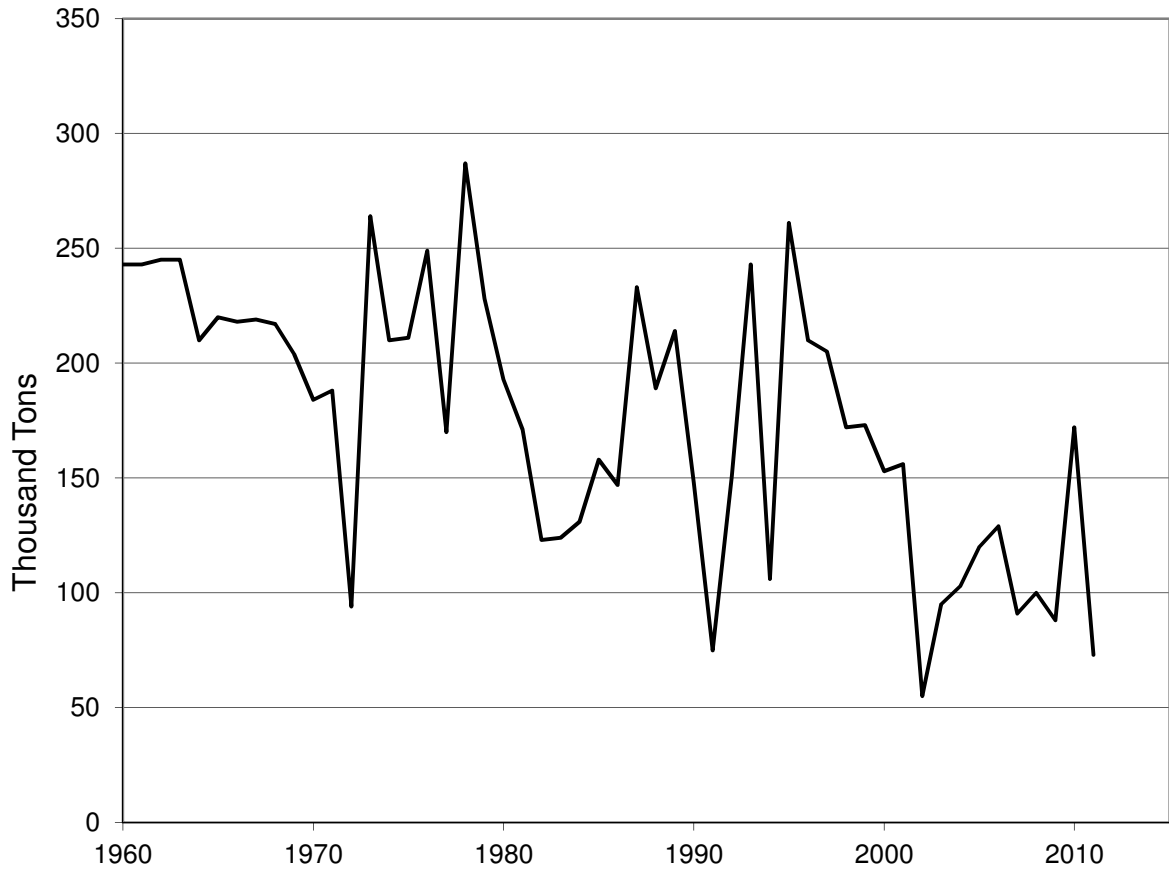
### Grain Production, Area, Yields, Consumption, and Imports in Lesotho, 1960-2011

Year	Production Thousand Tons	Area Harvested Thousand Hectares	Yield Tons per Hectare	Consumption Thousand Tons	Imports
1960	243	292	0.83	248	5
1961	243	292	0.83	249	6
1962	245	300	0.82	250	5
1963	245	300	0.82	254	9
1964	210	270	0.78	231	21
1965	220	273	0.81	241	21
1966	218	280	0.78	239	21
1967	219	254	0.86	247	28
1968	217	311	0.70	246	29
1969	204	297	0.69	243	39
1970	184	307	0.60	234	50
1971	188	319	0.59	238	50
1972	94	273	0.34	160	66
1973	264	290	0.91	335	71
1974	210	283	0.74	276	66
1975	211	291	0.73	281	70
1976	249	164	1.52	320	71
1977	170	231	0.74	239	69
1978	287	203	1.41	383	96
1979	228	198	1.15	335	107
1980	193	200	0.97	351	158
1981	171	200	0.86	381	210
1982	123	174	0.71	383	260
1983	124	194	0.64	176	52
1984	131	199	0.66	173	42
1985	158	186	0.85	183	25
1986	147	214	0.69	160	13
1987	233	263	0.89	266	33
1988	189	196	0.96	214	25
1989	214	211	1.01	215	1
1990	148	146	1.01	188	40
1991	75	110	0.68	108	33
1992	151	154	0.98	211	60
1993	243	213	1.14	305	62
1994	106	133	0.80	162	56
1995	261	197	1.32	290	33
1996	210	215	0.98	279	68
1997	205	214	0.96	215	7
1998	172	180	0.96	182	10
1999	173	173	1.00	182	9
2000	153	156	0.98	200	47
2001	156	172	0.91	291	135
2002	55	134	0.41	195	140
2003	95	199	0.48	300	205
2004	103	158	0.65	298	195
2005	120	208	0.58	285	165
2006	129	208	0.62	284	155
2007	91	157	0.58	251	160
2008	100	185	0.54	270	170
2009	88	170	0.52	278	190
2010	172	170	1.01	362	190
2011	73	170	0.43	288	215

Source: Compiled by Earth Policy Institute from U.S. Department of Agriculture, *Production, Supply and Distribution*, electronic database, at [www.fas.usda.gov/psdonline](http://www.fas.usda.gov/psdonline), updated 11 July 2012.

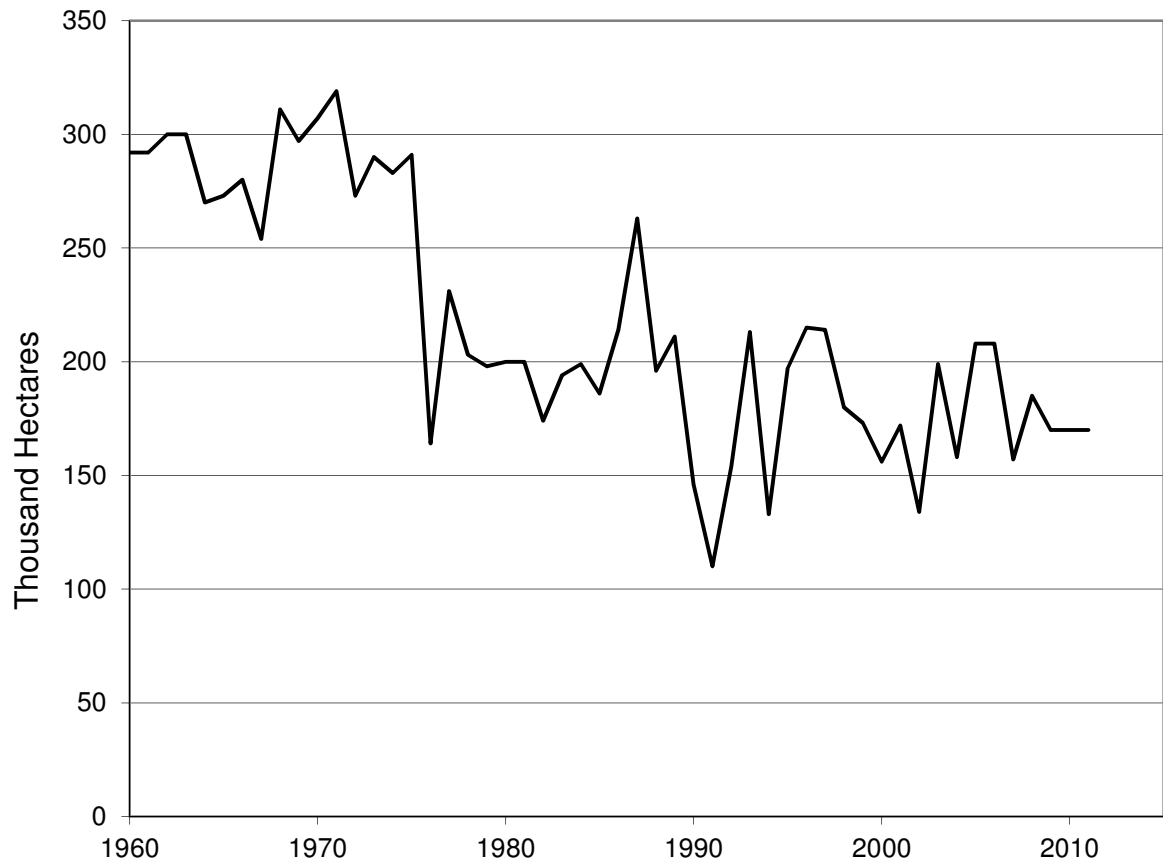
This is part of a supporting dataset for Lester R. Brown, **Full Planet, Empty Plates: The New Geopolitics of Food Scarcity** (New York: W.W. Norton & Company, 2012). For more information, see Earth Policy Institute on-line at [www.earth-policy.org](http://www.earth-policy.org).

Grain Production in Lesotho, 1960-2011



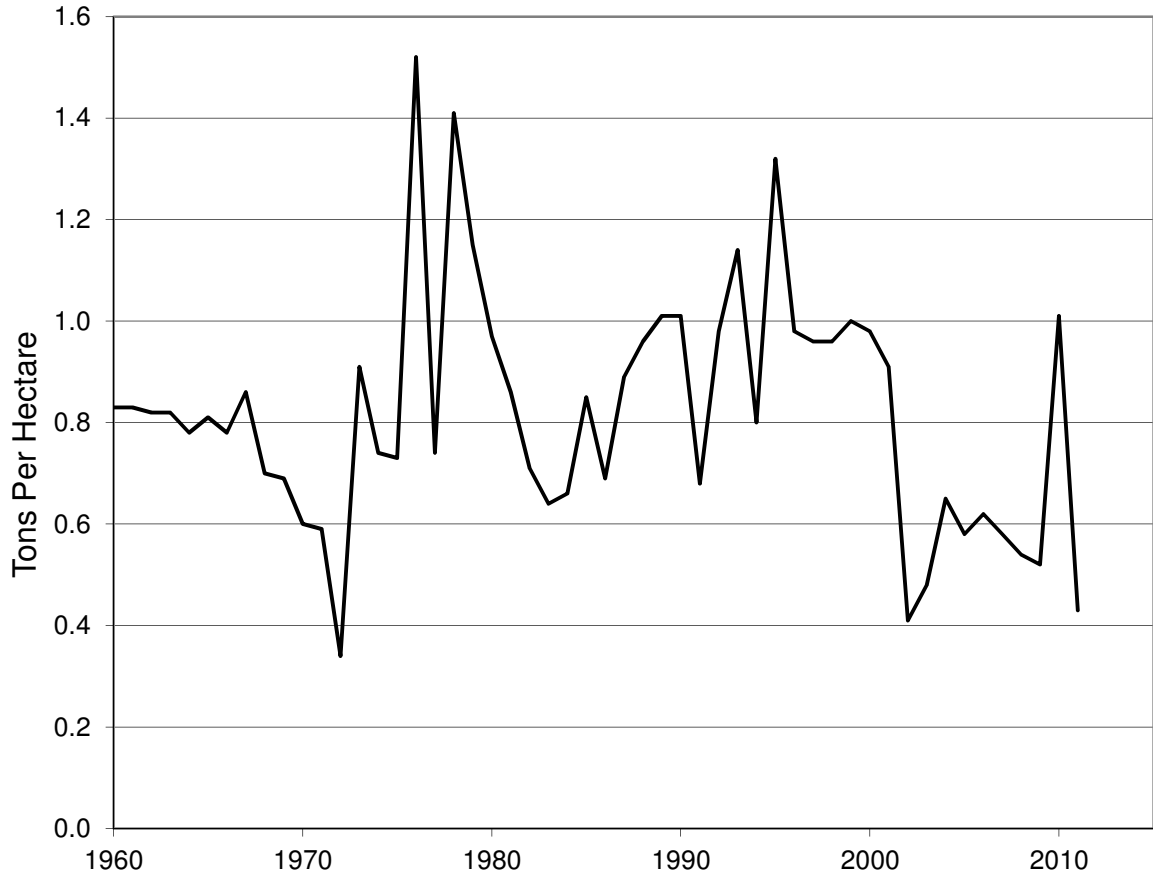
Source: USDA

Grain Area Harvested in Lesotho, 1960-2011



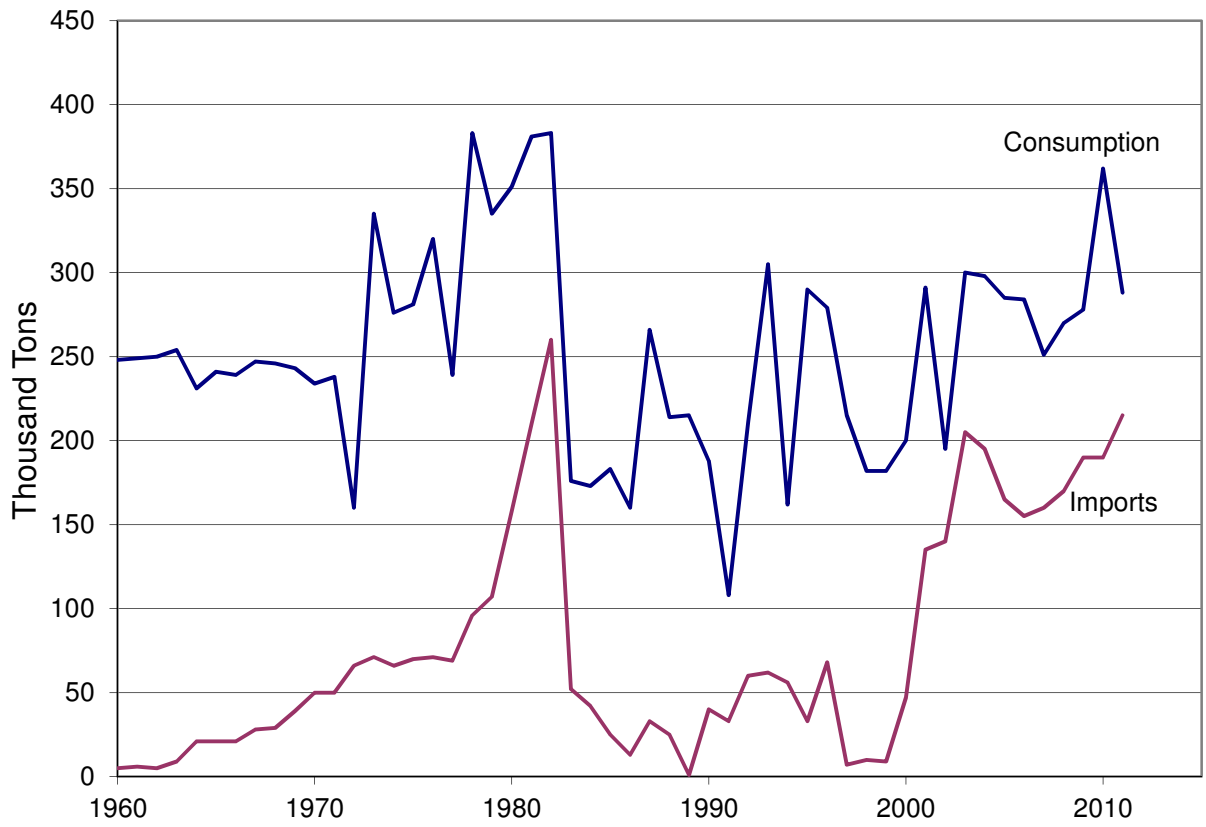
Source: USDA

Grain Yields in Lesotho, 1960-2011



Source: USDA

## Grain Consumption and Imports in Lesotho, 1960-2011



Source: USDA

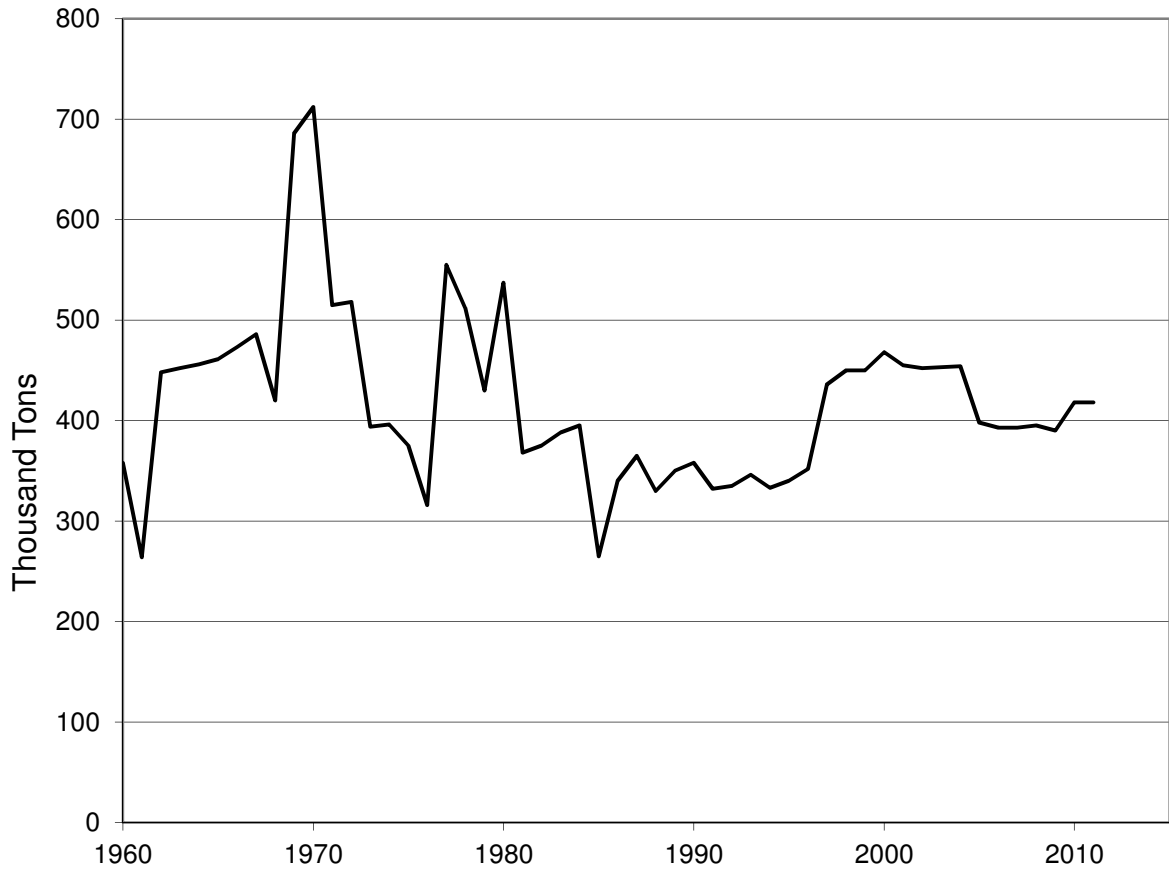
## Grain Production, Area, Yields, Consumption, and Imports in Haiti, 1960-2011

Year	Production Thousand Tons	Area Harvested Thousand Hectares	Yield Tons per Hectare	Consumption Thousand Tons	Imports
1960	358	345	1.04	388	30
1961	264	348	0.76	329	65
1962	448	614	0.73	495	47
1963	452	615	0.73	502	50
1964	456	620	0.74	509	53
1965	461	625	0.74	518	57
1966	473	645	0.73	514	41
1967	486	660	0.74	521	35
1968	420	602	0.70	482	62
1969	686	840	0.82	721	35
1970	712	835	0.85	753	43
1971	515	625	0.82	558	48
1972	518	636	0.81	600	82
1973	394	616	0.64	468	74
1974	396	616	0.64	490	94
1975	375	580	0.65	546	171
1976	316	550	0.57	459	150
1977	555	465	1.19	645	147
1978	512	465	1.10	660	122
1979	430	455	0.95	619	151
1980	537	460	1.17	716	194
1981	368	405	0.91	533	165
1982	375	405	0.93	547	177
1983	388	410	0.95	582	194
1984	395	415	0.95	620	220
1985	265	275	0.96	528	257
1986	340	370	0.92	637	297
1987	365	385	0.95	598	233
1988	330	345	0.96	648	318
1989	350	360	0.97	618	279
1990	358	377	0.95	695	337
1991	332	375	0.89	722	400
1992	335	358	0.94	724	397
1993	346	355	0.97	700	341
1994	333	353	0.94	790	480
1995	340	350	0.97	731	388
1996	352	418	0.84	780	428
1997	436	485	0.90	860	450
1998	450	516	0.87	940	490
1999	450	515	0.87	964	515
2000	468	517	0.91	942	472
2001	455	505	0.90	974	544
2002	452	517	0.87	1,008	603
2003	453	518	0.87	1,017	531
2004	454	517	0.88	1,031	589
2005	398	513	0.78	979	648
2006	393	514	0.76	988	545
2007	393	514	0.76	905	472
2008	395	520	0.76	1,021	561
2009	390	520	0.75	1,007	510
2010	418	550	0.76	980	525
2011	418	550	0.76	995	580

Source: Compiled by Earth Policy Institute from U.S. Department of Agriculture, *Production, Supply and Distribution*, electronic database, at [www.fas.usda.gov/psdonline](http://www.fas.usda.gov/psdonline), updated 11 July 2012.

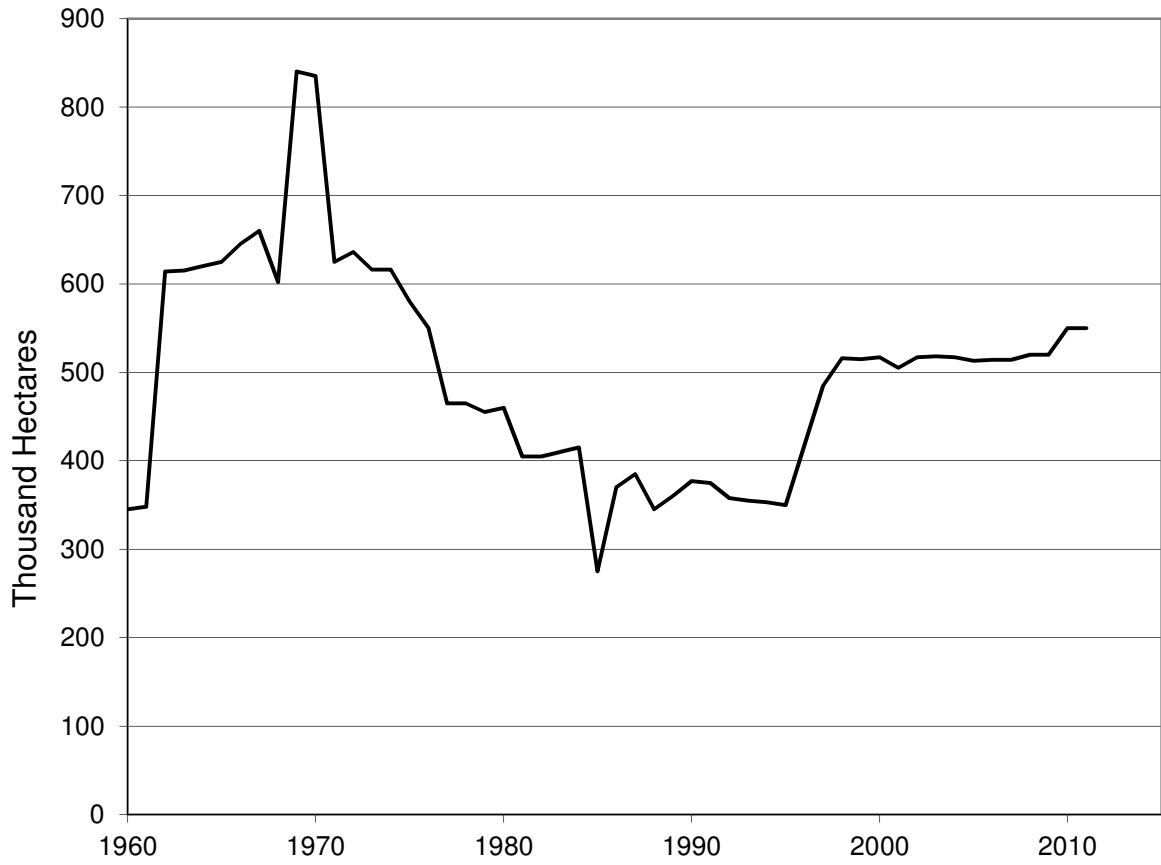
This is part of a supporting dataset for Lester R. Brown, **Full Planet, Empty Plates: The New Geopolitics of Food Scarcity** (New York: W.W. Norton & Company, 2012). For more information, see Earth Policy Institute on-line at [www.earth-policy.org](http://www.earth-policy.org).

Grain Production in Haiti, 1960-2011



Source: USDA

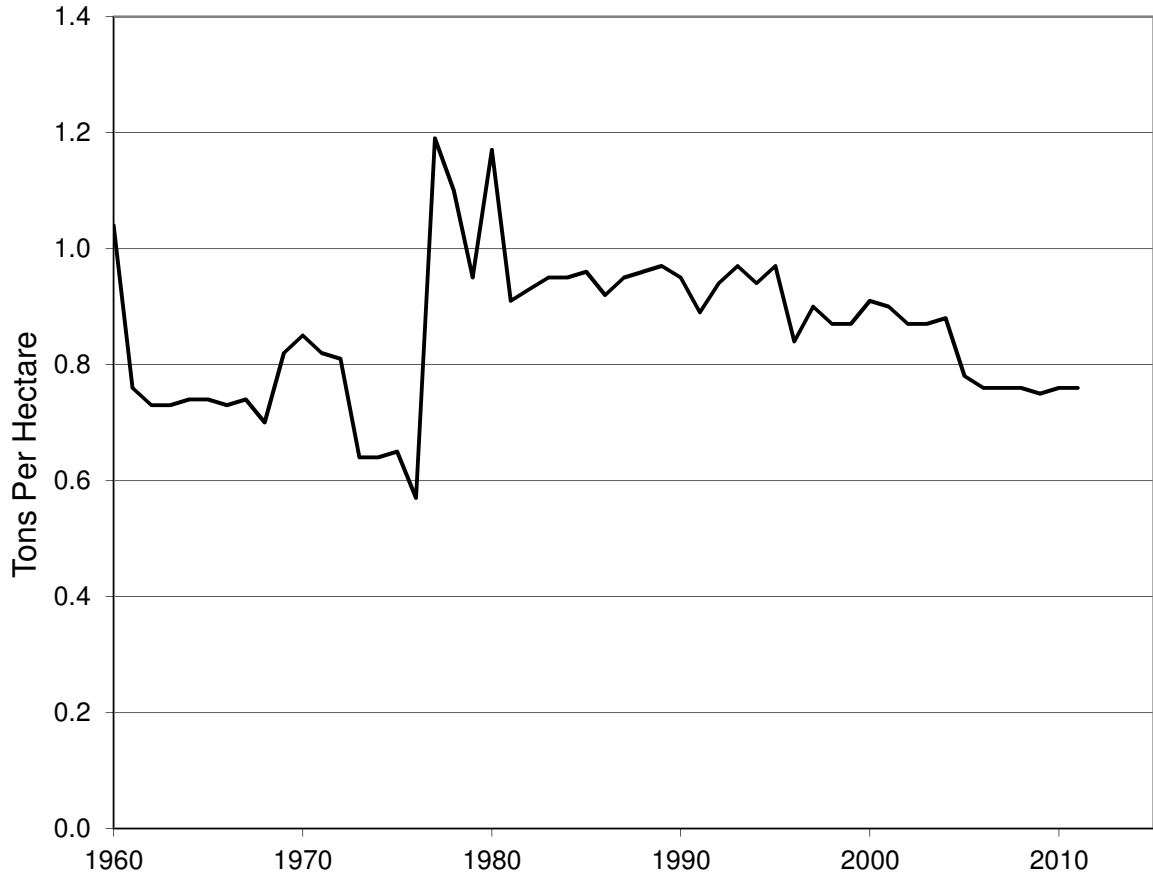
Grain Area Harvested in Haiti, 1960-2011



Source: USDA

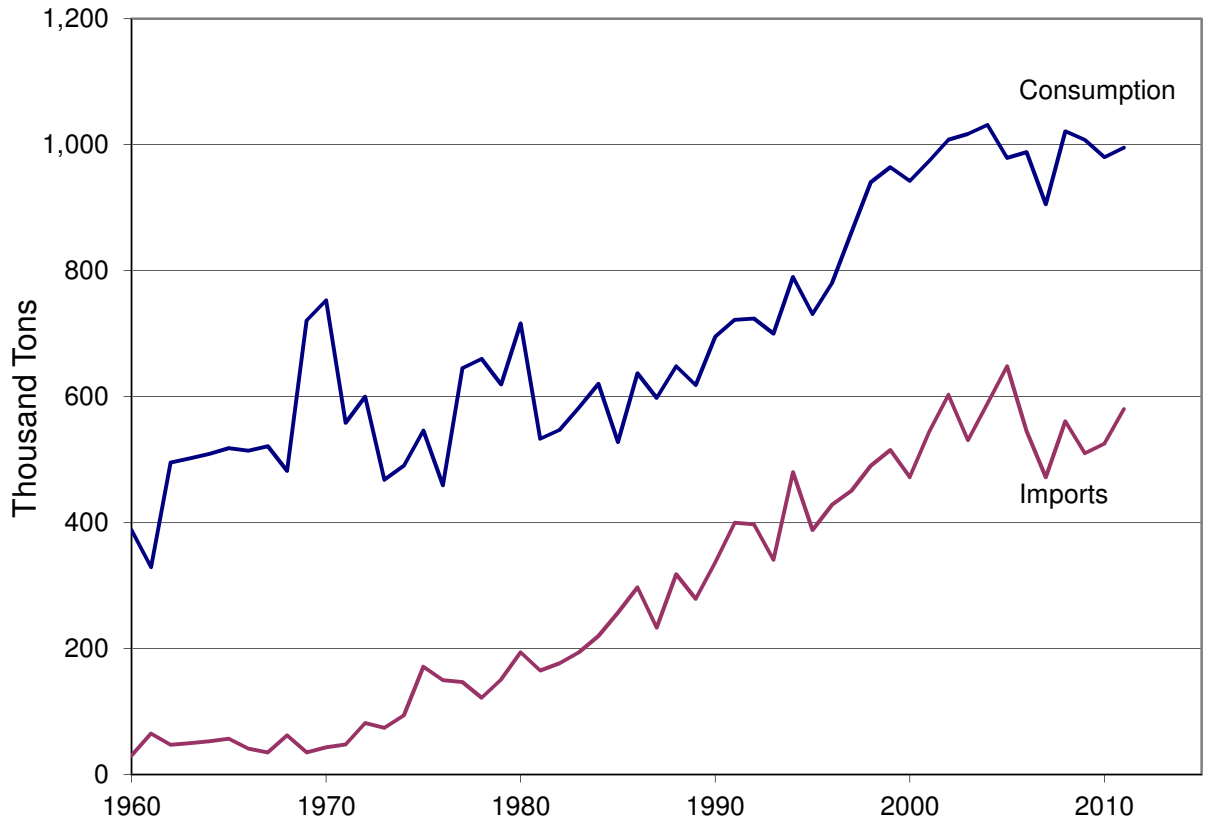


### Grain Yields in Haiti, 1960-2011



Source: USDA

## Grain Consumption and Imports in Haiti, 1960-2011



Source: USDA

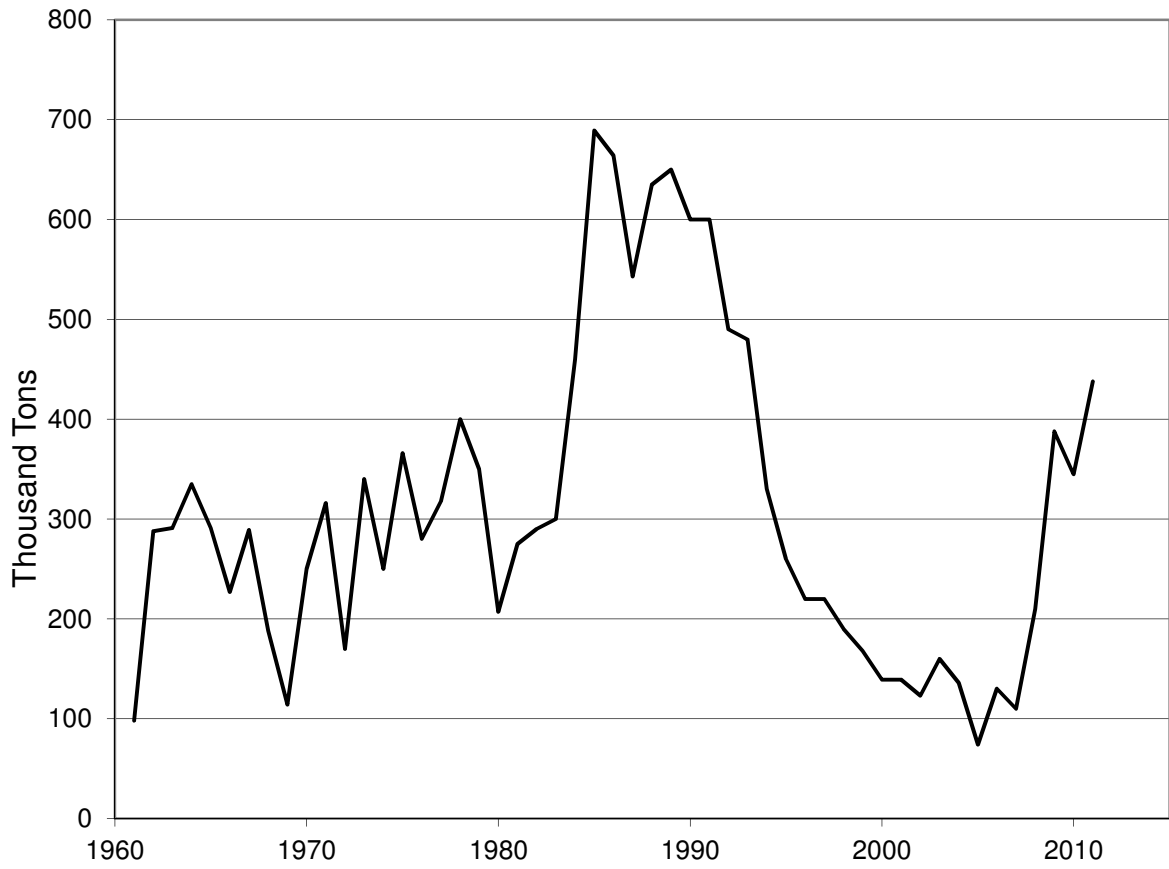
## Grain Production, Area, Yields, Consumption, and Imports in Mongolia, 1961-2011

Year	Production Thousand Tons	Area Harvested Thousand Hectares	Yield Tons per Hectare	Consumption Thousand Tons	Imports
1961	98	267	0.37	138	40
1962	288	320	0.90	340	52
1963	291	348	0.84	299	8
1964	335	356	0.94	357	22
1965	291	362	0.80	357	66
1966	227	343	0.66	248	21
1967	289	344	0.84	305	16
1968	188	346	0.54	204	16
1969	114	347	0.33	140	26
1970	250	348	0.72	355	105
1971	316	333	0.95	371	55
1972	170	314	0.54	220	50
1973	340	307	1.11	355	15
1974	250	305	0.82	265	15
1975	366	316	1.16	381	15
1976	280	324	0.86	339	59
1977	318	351	0.91	411	93
1978	400	360	1.11	443	43
1979	350	360	0.97	390	40
1980	207	408	0.51	247	40
1981	275	410	0.67	325	50
1982	290	410	0.71	340	50
1983	300	410	0.73	350	50
1984	460	461	1.00	460	0
1985	689	482	1.43	689	0
1986	664	467	1.42	664	0
1987	543	470	1.16	543	0
1988	635	475	1.34	635	0
1989	650	475	1.37	650	0
1990	600	475	1.26	630	30
1991	600	475	1.26	609	9
1992	490	590	0.83	529	39
1993	480	545	0.88	625	145
1994	330	450	0.73	350	34
1995	260	355	0.73	310	50
1996	220	300	0.73	350	130
1997	220	300	0.73	359	139
1998	190	300	0.63	349	159
1999	168	273	0.62	274	106
2000	139	179	0.78	319	180
2001	139	193	0.72	393	254
2002	123	209	0.59	331	208
2003	160	203	0.79	394	234
2004	136	168	0.81	333	197
2005	74	154	0.48	401	327
2006	130	118	1.10	426	296
2007	110	117	0.94	338	228
2008	210	150	1.40	554	344
2009	388	250	1.55	648	260
2010	345	250	1.38	446	101
2011	438	275	1.59	538	100

Source: Compiled by Earth Policy Institute from U.S. Department of Agriculture, *Production, Supply and Distribution*, electronic database, at [www.fas.usda.gov/psdonline](http://www.fas.usda.gov/psdonline), updated 10 April 2012.

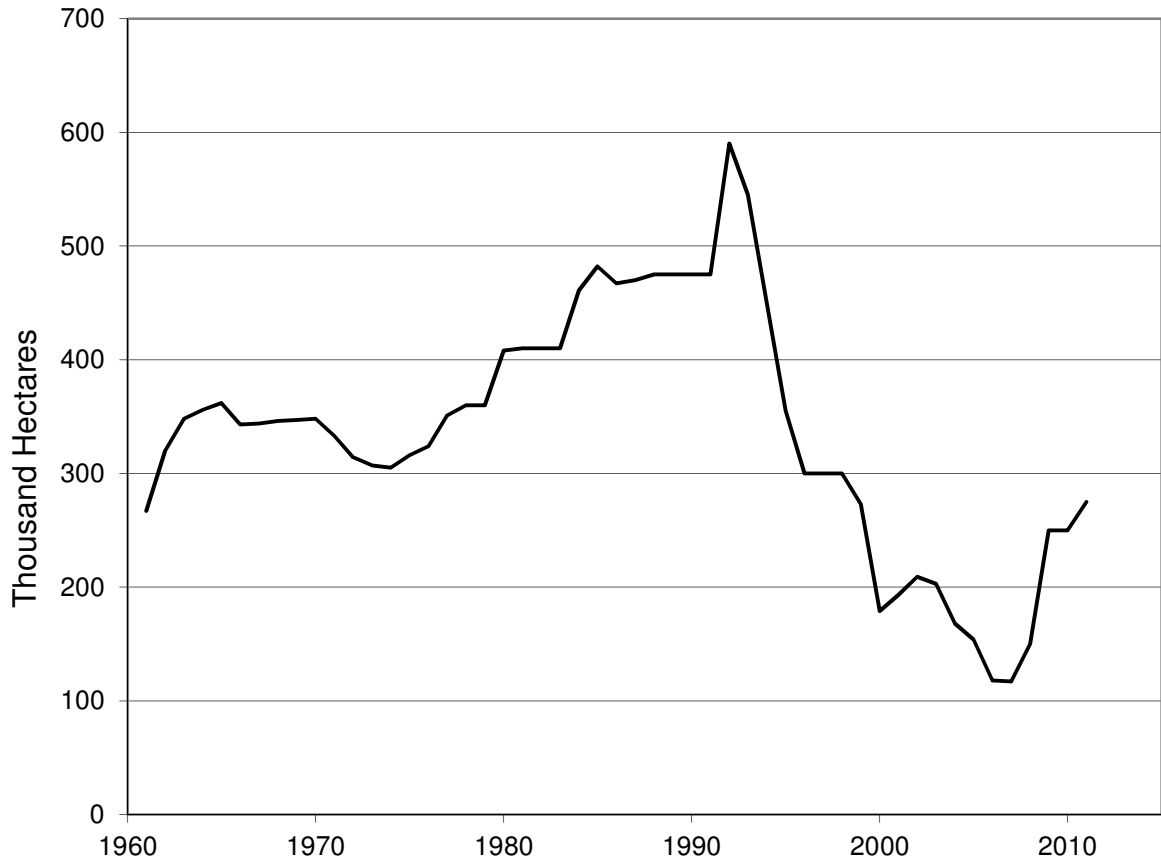
This is part of a supporting dataset for Lester R. Brown, **Full Planet, Empty Plates: The New Geopolitics of Food Scarcity** (New York: W.W. Norton & Company, 2012). For more information, see Earth Policy Institute on-line at [www.earth-policy.org](http://www.earth-policy.org).

Grain Production in Mongolia, 1961-2011



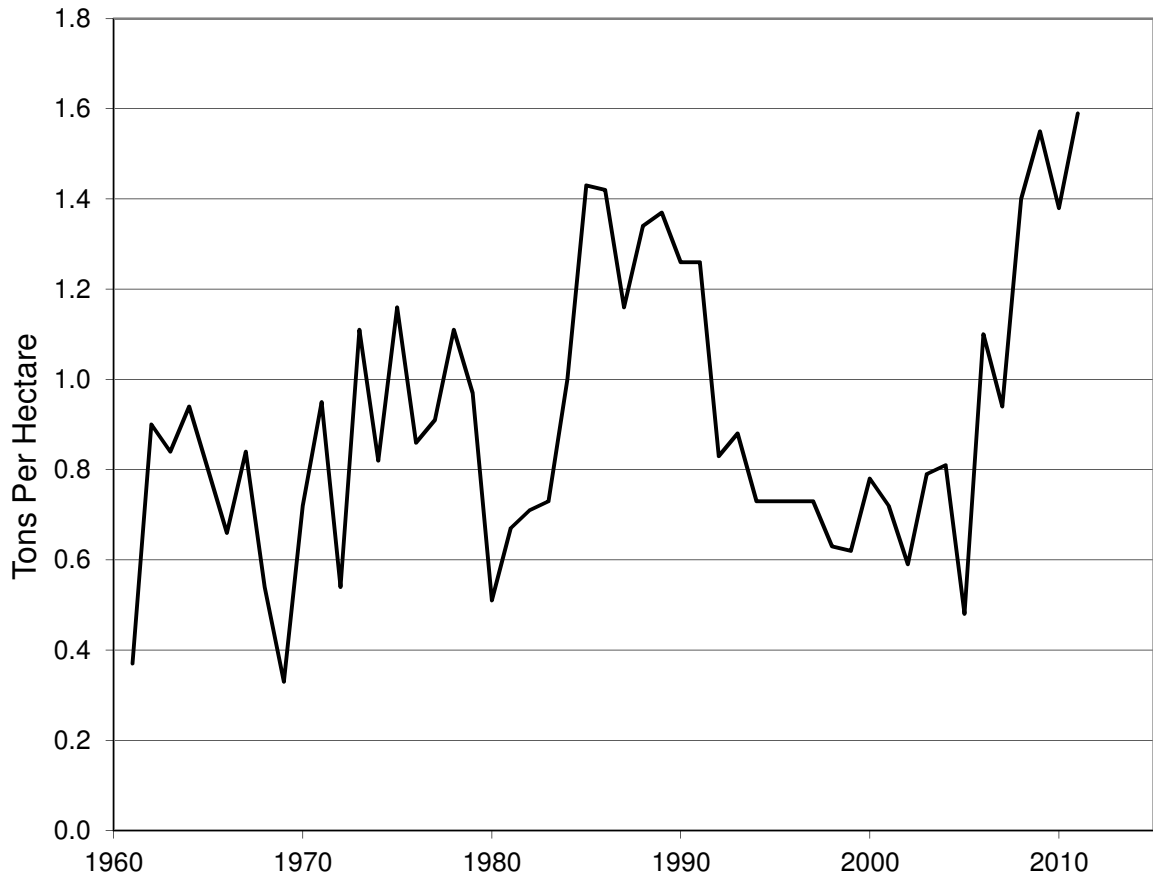
Source: USDA

Grain Area Harvested in Mongolia, 1961-2011



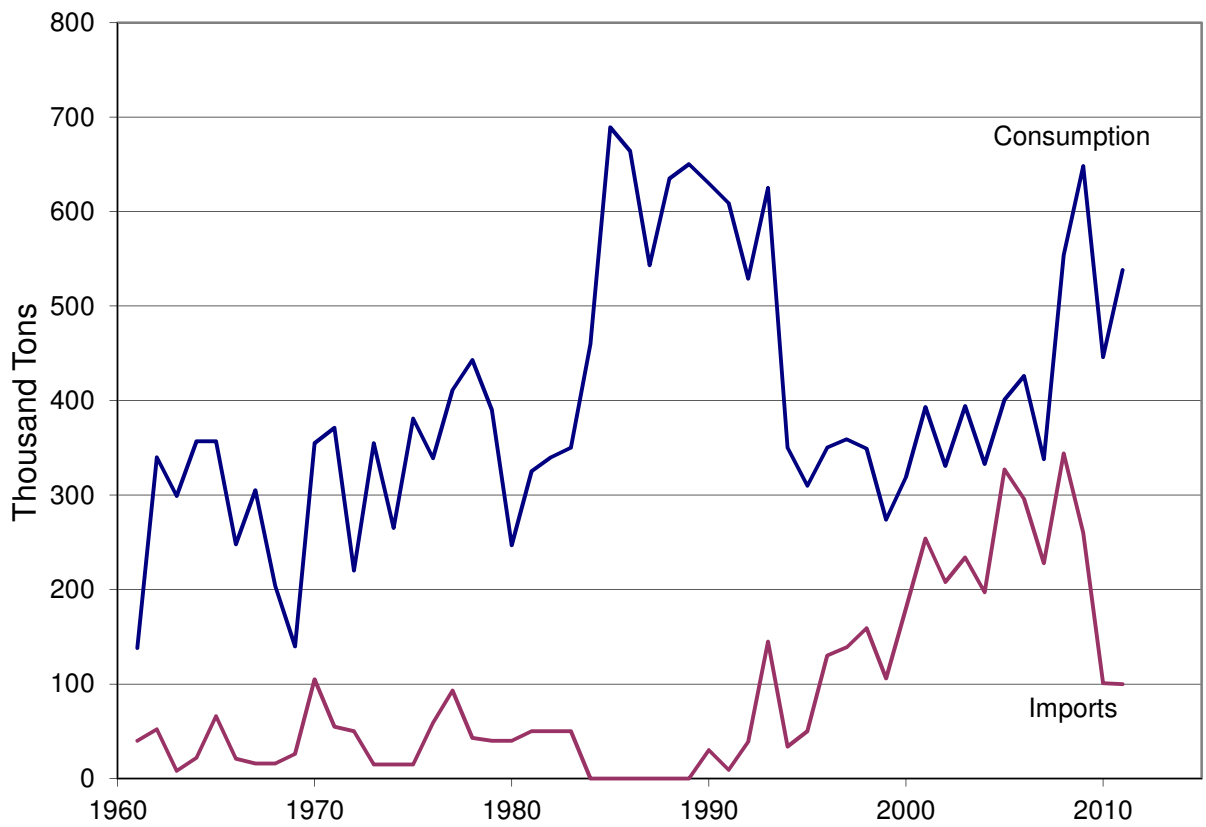
Source: USDA

Grain Yields in Mongolia, 1961-2011



Source: USDA

# Grain Consumption and Imports in Mongolia, 1961-2011



Source: USDA

## Grain Production, Area, Yields, Consumption, and Imports in North Korea, 1960-2011

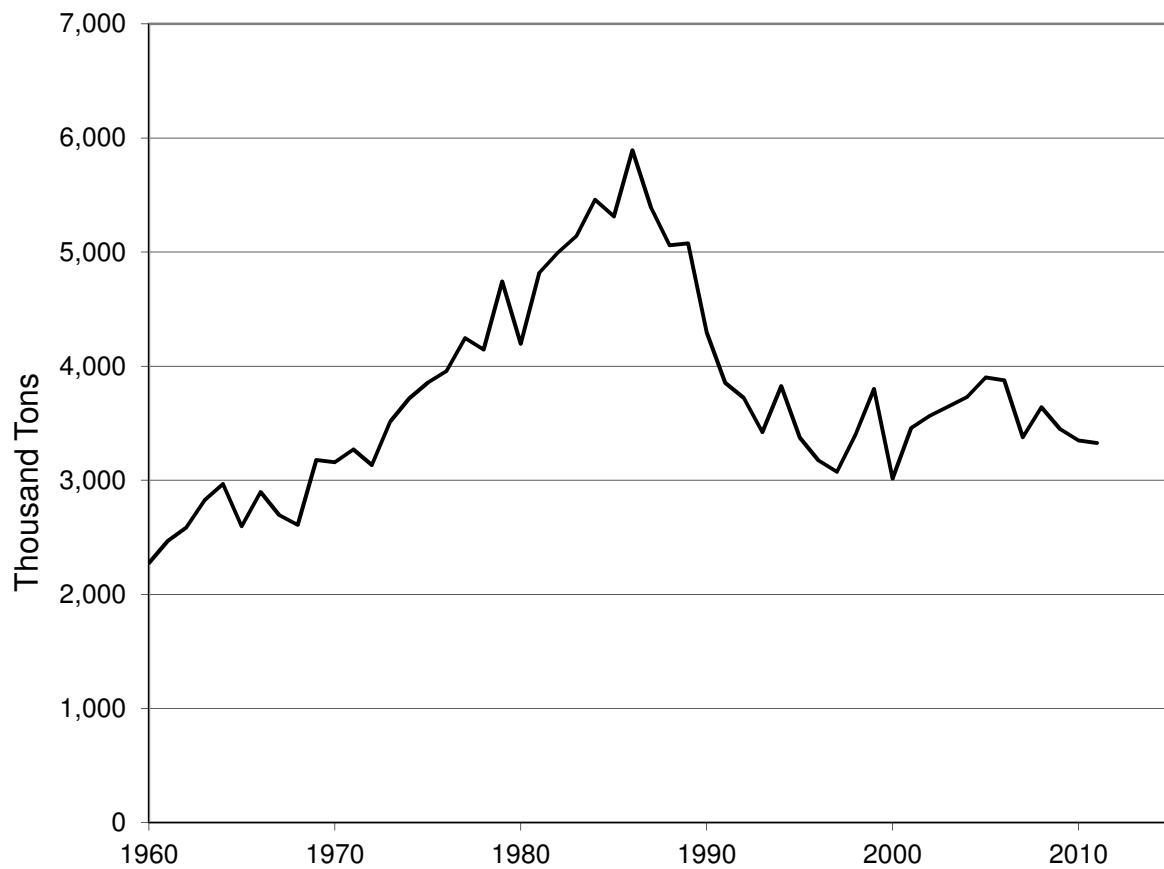
Year	Production Thousand Tons	Area Harvested Thousand Hectares	Yield Tons per Hectare	Consumption Thousand Tons	Imports
1960	2,274	1,193	1.91	2,449	202
1961	2,465	1,213	2.03	2,700	240
1962	2,582	1,235	2.09	2,690	133
1963	2,824	1,245	2.27	2,896	107
1964	2,968	1,258	2.36	3,027	108
1965	2,598	1,268	2.05	2,898	382
1966	2,896	1,280	2.26	3,294	528
1967	2,696	1,290	2.09	2,670	44
1968	2,607	1,305	2.00	2,832	331
1969	3,178	1,320	2.41	3,370	311
1970	3,158	1,335	2.37	3,319	274
1971	3,271	1,350	2.42	3,653	480
1972	3,132	1,365	2.29	3,820	794
1973	3,518	1,380	2.55	4,380	1,158
1974	3,717	1,395	2.66	3,618	429
1975	3,856	1,405	2.74	3,812	345
1976	3,958	1,410	2.81	3,716	327
1977	4,245	1,415	3.00	3,707	74
1978	4,146	1,415	2.93	3,861	149
1979	4,742	1,833	2.59	4,680	226
1980	4,196	1,833	2.29	4,295	368
1981	4,819	1,835	2.63	5,013	398
1982	4,996	1,830	2.73	5,105	211
1983	5,140	1,840	2.79	5,609	500
1984	5,457	1,845	2.96	5,930	550
1985	5,311	1,855	2.86	5,869	578
1986	5,894	1,815	3.25	6,035	320
1987	5,390	1,715	3.14	5,696	542
1988	5,061	1,595	3.17	5,368	375
1989	5,076	1,510	3.36	5,551	518
1990	4,296	1,370	3.14	5,371	1,085
1991	3,855	1,370	2.81	4,907	1,052
1992	3,723	1,370	2.72	4,551	828
1993	3,423	1,370	2.50	3,970	559
1994	3,825	1,390	2.75	4,779	954
1995	3,375	1,255	2.69	3,843	468
1996	3,175	1,250	2.54	4,481	1,306
1997	3,075	1,270	2.42	4,351	1,276
1998	3,400	1,315	2.59	4,462	1,062
1999	3,800	1,275	2.98	4,684	884
2000	3,015	1,178	2.56	4,540	1,525
2001	3,458	1,205	2.87	4,757	1,299
2002	3,564	1,198	2.97	4,657	1,093
2003	3,645	1,203	3.03	4,686	1,041
2004	3,730	1,208	3.09	4,646	916
2005	3,900	1,210	3.22	4,441	541
2006	3,875	1,232	3.15	4,911	1,036
2007	3,378	1,232	2.74	3,958	580
2008	3,640	1,248	2.92	4,302	662
2009	3,450	1,241	2.78	4,039	589
2010	3,350	1,225	2.73	3,968	618
2011	3,325	1,215	2.74	3,925	600

Source: Compiled by Earth Policy Institute from U.S. Department of Agriculture, *Production, Supply and Distribution*, electronic database, at [www.fas.usda.gov/psdonline](http://www.fas.usda.gov/psdonline), updated 10 April 2012.

This is part of a supporting dataset for Lester R. Brown, **Full Planet, Empty Plates: The New Geopolitics of Food Scarcity** (New York: W.W. Norton & Company, 2012). For more information, see Earth Policy Institute on-line at [www.earth-policy.org](http://www.earth-policy.org).



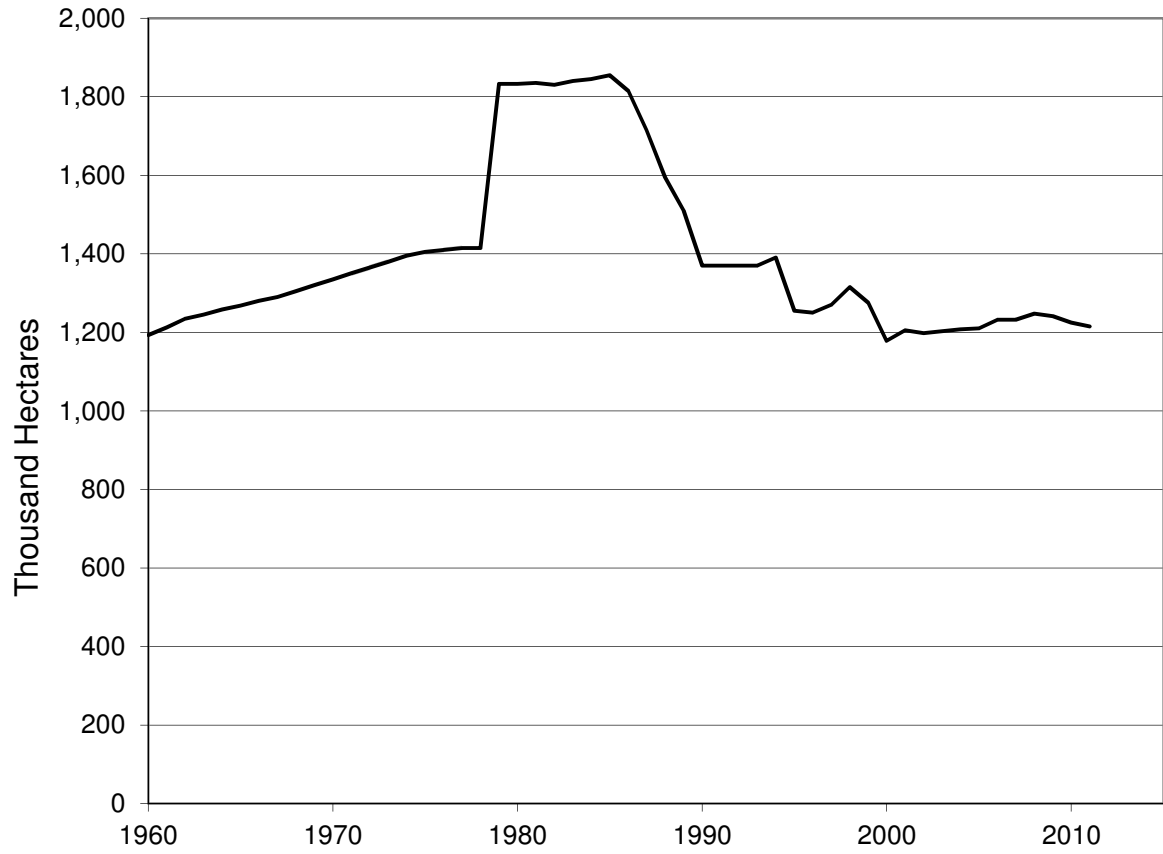
### Grain Production in North Korea, 1960-2011



Source: USDA

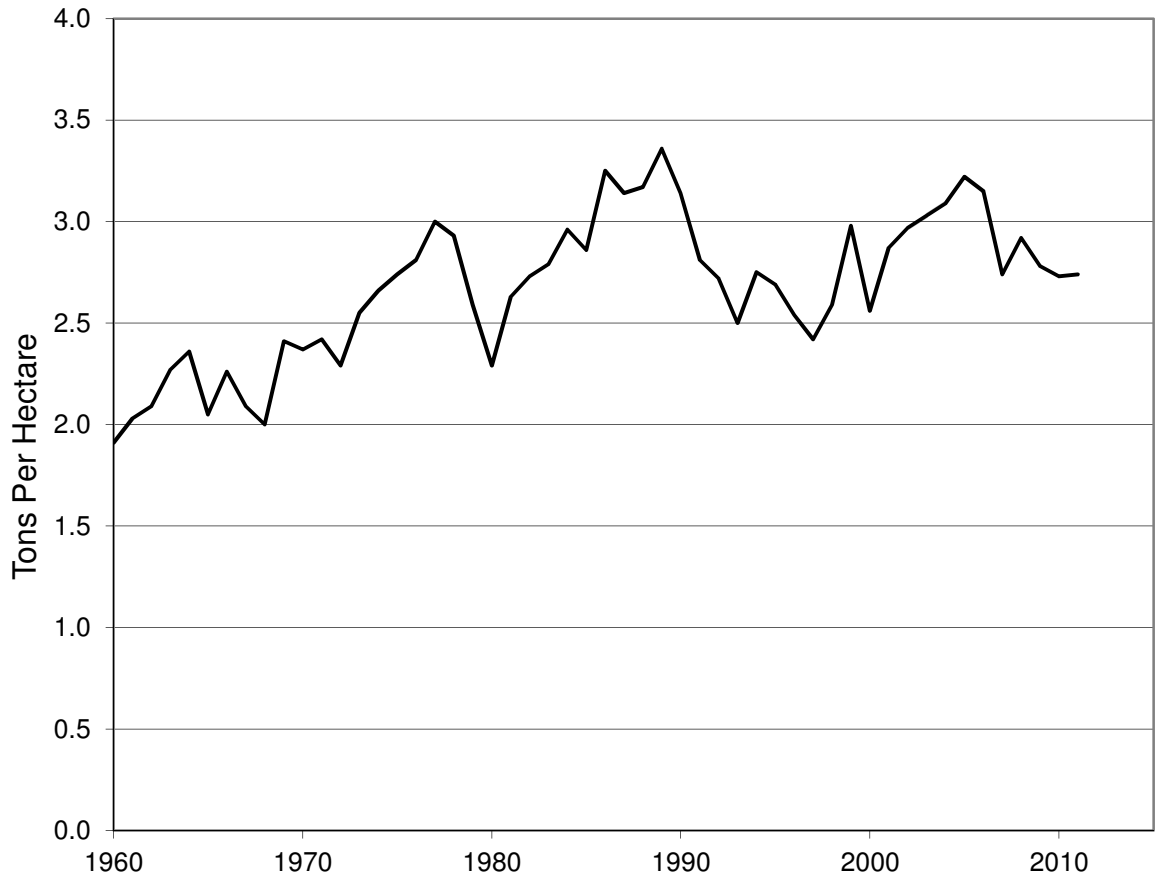
Earth Policy Institute - [www.earth-policy.org](http://www.earth-policy.org)

Grain Area Harvested in North Korea, 1960-2011



Source: USDA

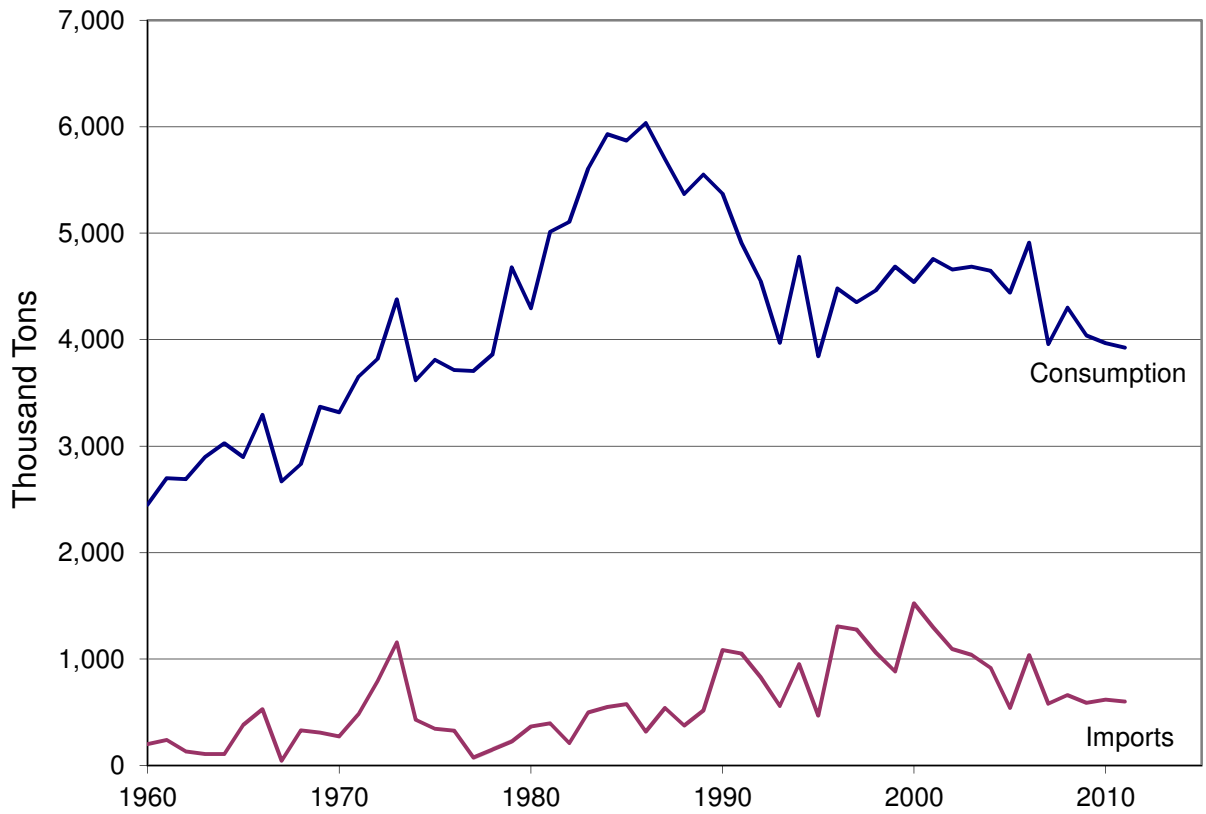
Grain Yields in North Korea, 1960-2011



Source: USDA

Earth Policy Institute - [www.earth-policy.org](http://www.earth-policy.org)

## Grain Consumption and Imports in North Korea, 1960-2011



Source: USDA

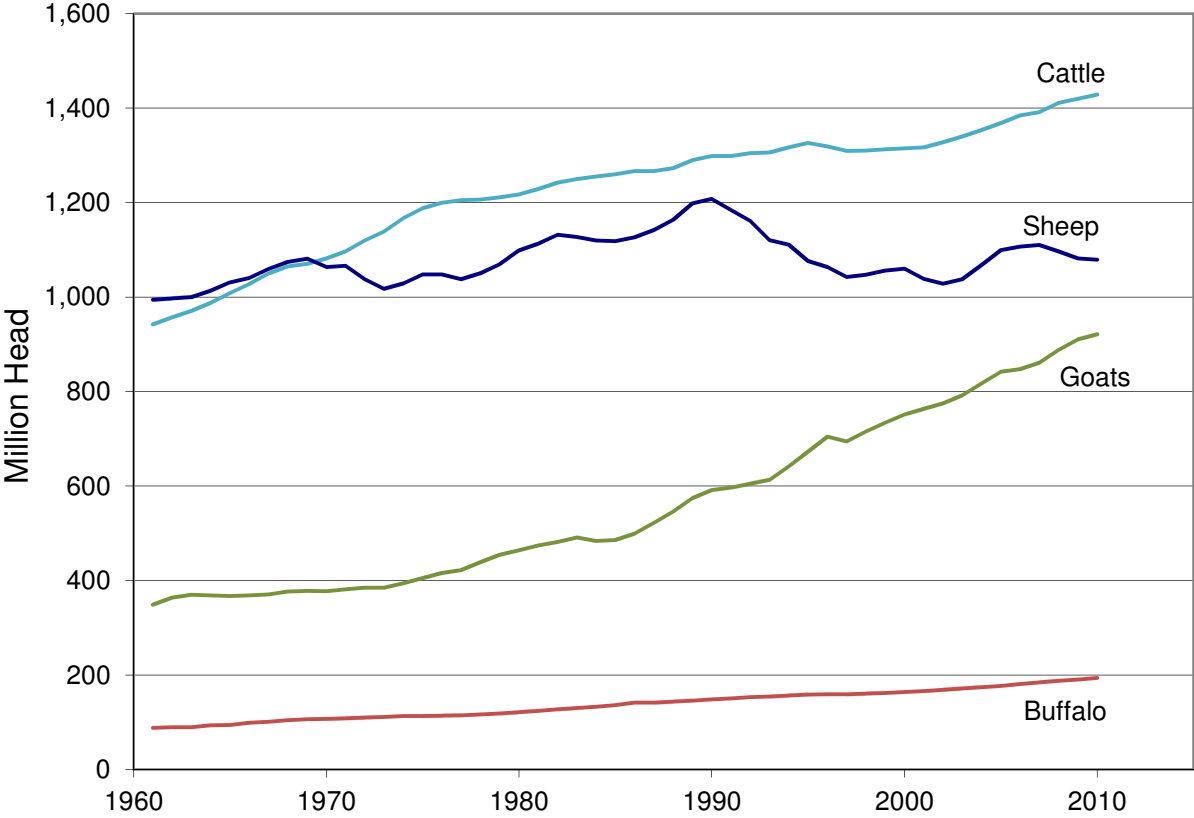
### World Grazing Livestock by Type, 1961-2010

Year	Buffalo	Cattle	Goats	Sheep	Total
Million Head					
1961	88	942	349	994	2,373
1962	89	957	364	997	2,407
1963	90	970	370	1,000	2,430
1964	93	988	368	1,013	2,463
1965	94	1,009	367	1,031	2,502
1966	99	1,028	369	1,041	2,536
1967	101	1,050	371	1,059	2,581
1968	104	1,065	377	1,074	2,620
1969	106	1,070	378	1,081	2,635
1970	107	1,082	378	1,063	2,630
1971	109	1,097	382	1,066	2,653
1972	110	1,119	385	1,038	2,652
1973	111	1,139	385	1,018	2,653
1974	113	1,167	394	1,029	2,703
1975	113	1,188	405	1,048	2,754
1976	114	1,200	416	1,048	2,778
1977	115	1,205	422	1,038	2,780
1978	117	1,206	439	1,051	2,812
1979	119	1,211	455	1,069	2,854
1980	121	1,217	464	1,099	2,902
1981	124	1,229	474	1,113	2,940
1982	128	1,242	482	1,132	2,983
1983	130	1,249	491	1,127	2,998
1984	133	1,255	484	1,119	2,992
1985	136	1,260	486	1,119	3,001
1986	142	1,267	500	1,127	3,035
1987	142	1,267	522	1,142	3,073
1988	144	1,273	546	1,164	3,126
1989	146	1,290	574	1,198	3,208
1990	148	1,298	591	1,208	3,246
1991	150	1,298	597	1,184	3,230
1992	153	1,305	605	1,161	3,224
1993	155	1,306	613	1,121	3,194
1994	157	1,317	642	1,111	3,226
1995	159	1,326	673	1,076	3,234
1996	160	1,319	704	1,063	3,246
1997	159	1,309	694	1,042	3,205
1998	161	1,310	715	1,047	3,233
1999	162	1,313	734	1,056	3,265
2000	164	1,315	751	1,060	3,290
2001	166	1,316	763	1,038	3,284
2002	169	1,327	775	1,028	3,300
2003	172	1,339	792	1,038	3,341
2004	174	1,354	817	1,068	3,413
2005	177	1,369	842	1,100	3,487
2006	181	1,385	847	1,107	3,520
2007	184	1,391	861	1,110	3,546
2008	187	1,411	888	1,096	3,582
2009	190	1,420	911	1,081	3,602
2010	194	1,429	921	1,079	3,623

Source: Compiled by Earth Policy Institute from U.N. Food and Agriculture Organization, *FAOSTAT*, electronic database, at [faostat.fao.org](http://faostat.fao.org), updated 23 February 2012.

This is part of a supporting dataset for Lester R. Brown, **Full Planet, Empty Plates: The New Geopolitics of Food Scarcity** (New York: W.W. Norton & Company, 2012). For more information, see Earth Policy Institute on-line at [www.earth-policy.org](http://www.earth-policy.org).

World Grazing Livestock by Type, 1961-2010



Source: FAO

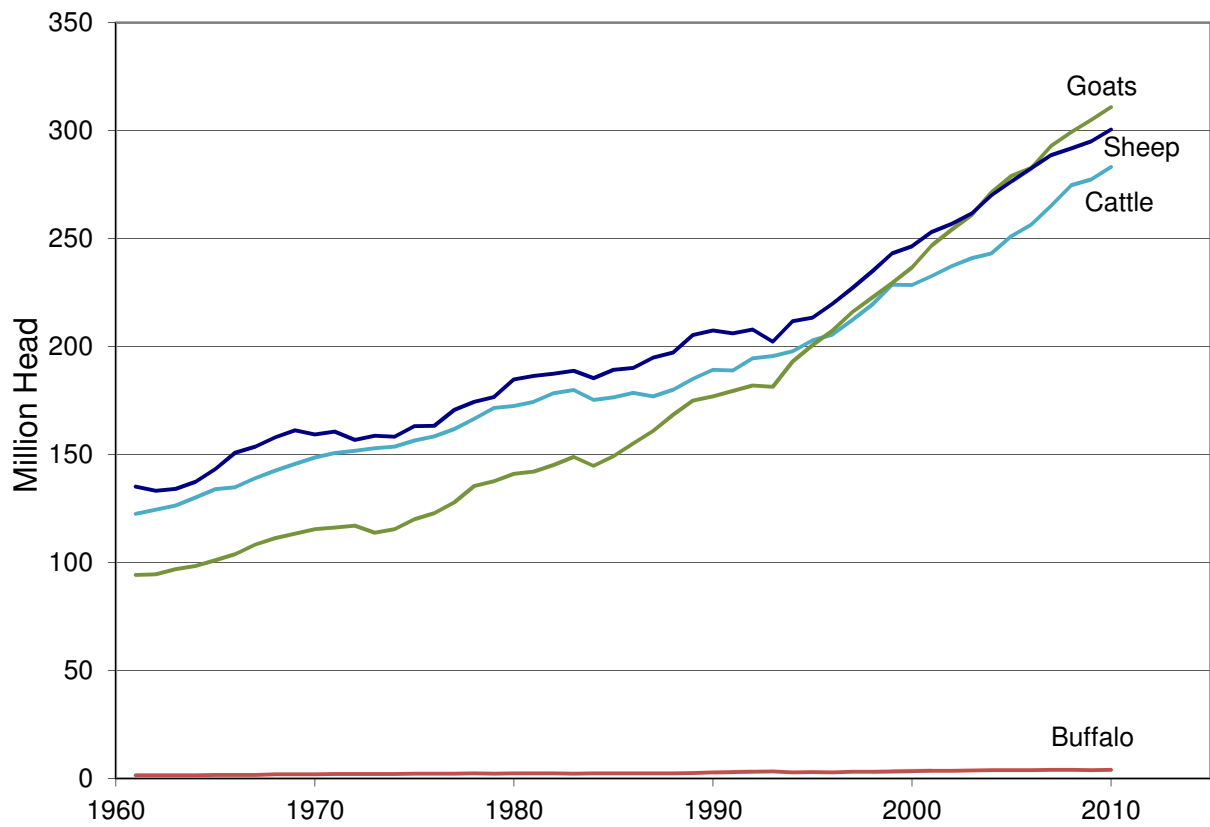
### Grazing Livestock in Africa, 1961-2010

Year	Buffalo	Cattle	Goats	Sheep	Total
Million Head					
1961	1.5	122.5	94.3	135.1	353.4
1962	1.5	124.5	94.5	133.2	353.7
1963	1.6	126.5	96.9	134.2	359.1
1964	1.6	130.2	98.4	137.3	367.5
1965	1.6	134.0	101.0	143.3	380.0
1966	1.6	134.8	103.9	150.8	391.2
1967	1.7	139.0	108.3	153.7	402.6
1968	1.9	142.6	111.3	158.0	413.8
1969	2.0	145.6	113.3	161.2	422.1
1970	2.0	148.6	115.4	159.3	425.3
1971	2.1	150.7	116.1	160.6	429.6
1972	2.1	151.8	117.1	156.8	427.8
1973	2.1	152.9	113.9	158.7	427.6
1974	2.2	153.7	115.5	158.2	429.6
1975	2.2	156.5	120.0	163.1	441.8
1976	2.2	158.3	122.8	163.3	446.7
1977	2.3	161.9	127.9	170.7	462.8
1978	2.3	166.6	135.4	174.4	478.8
1979	2.3	171.6	137.6	176.6	488.2
1980	2.3	172.5	141.1	184.8	500.7
1981	2.4	174.4	142.2	186.4	505.4
1982	2.4	178.3	145.2	187.4	513.4
1983	2.3	179.8	149.0	188.8	520.0
1984	2.4	175.3	144.8	185.4	508.0
1985	2.4	176.5	149.2	189.2	517.3
1986	2.4	178.5	155.1	190.1	526.2
1987	2.5	177.0	161.0	194.8	535.2
1988	2.5	180.1	168.5	197.3	548.3
1989	2.5	185.1	175.0	205.3	567.9
1990	2.9	189.2	177.0	207.5	576.6
1991	3.0	188.9	179.4	206.1	577.4
1992	3.2	194.5	182.0	207.9	587.6
1993	3.3	195.6	181.3	202.2	582.4
1994	2.9	197.8	193.1	211.7	605.5
1995	3.0	202.9	200.6	213.4	619.8
1996	2.9	205.6	207.3	219.7	635.5
1997	3.1	212.2	215.9	227.0	658.2
1998	3.1	219.4	222.7	234.8	680.1
1999	3.3	228.6	229.4	243.2	704.6
2000	3.4	228.5	236.6	246.4	714.9
2001	3.5	232.6	246.8	253.1	735.9
2002	3.6	237.2	254.2	256.7	751.7
2003	3.8	240.9	261.0	261.6	767.2
2004	3.8	243.1	271.4	270.1	788.4
2005	3.9	251.2	278.9	276.5	810.5
2006	3.9	256.5	282.7	282.5	825.7
2007	4.1	265.2	292.9	288.6	850.8
2008	4.1	274.7	299.3	291.7	869.7
2009	3.8	277.4	304.9	295.0	881.1
2010	4.0	283.1	310.9	300.4	898.4

Source: Compiled by Earth Policy Institute from U.N. Food and Agriculture Organization, *FAOSTAT*, electronic database, at [faostat.fao.org](http://faostat.fao.org), updated 23 February 2012.

This is part of a supporting dataset for Lester R. Brown, **Full Planet, Empty Plates: The New Geopolitics of Food Scarcity** (New York: W.W. Norton & Company, 2012). For more information, see Earth Policy Institute on-line at [www.earth-policy.org](http://www.earth-policy.org).

# Grazing Livestock in Africa, 1961-2010



Source: FAO



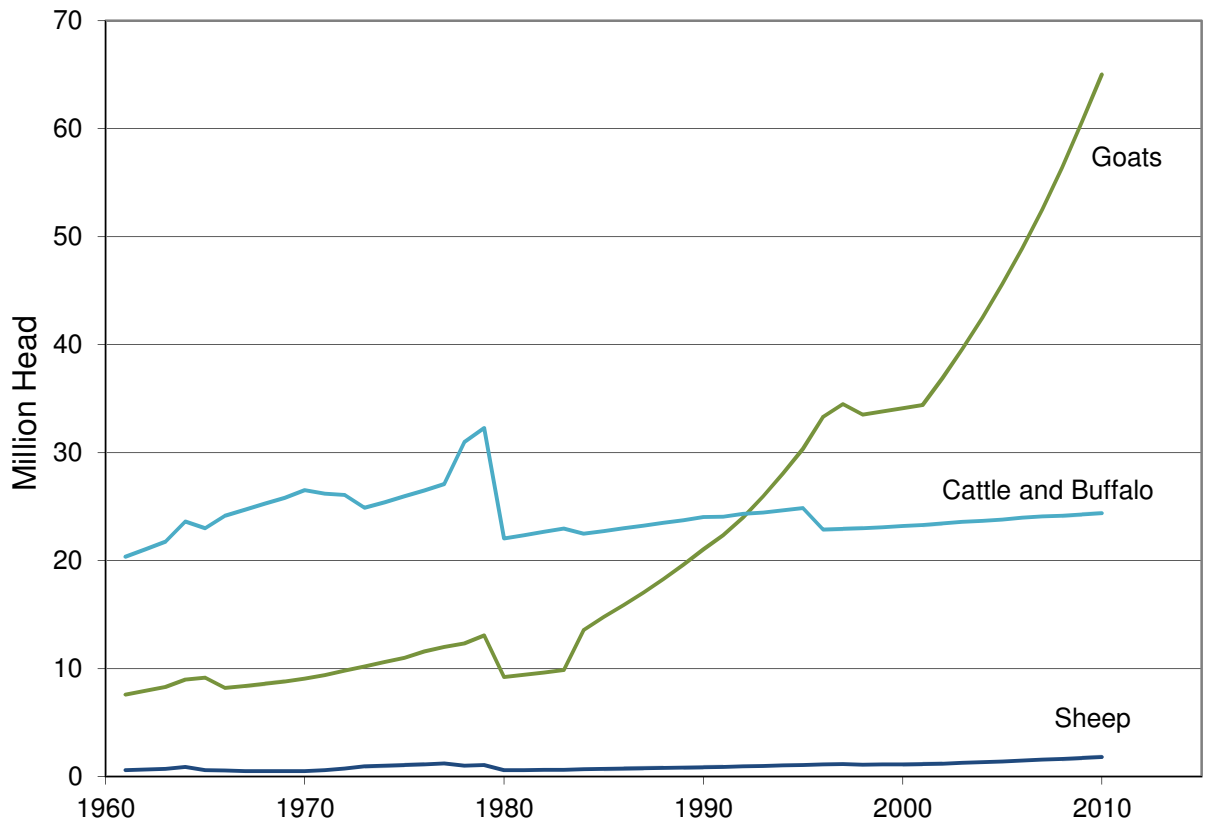
### Grazing Livestock in Bangladesh, 1961-2010

Year	Buffalo	Cattle	Goats	Sheep	Total
	Million Head				
1961	0.5	19.9	7.6	0.6	28.1
1962	0.6	20.5	8.0	0.7	29.1
1963	0.6	21.2	8.3	0.7	30.2
1964	0.6	23.0	9.0	0.9	32.9
1965	0.6	22.4	9.2	0.6	32.1
1966	0.7	23.5	8.2	0.6	32.3
1967	0.7	24.0	8.4	0.5	32.9
1968	0.8	24.5	8.6	0.5	33.6
1969	0.8	25.0	8.8	0.5	34.3
1970	0.8	25.7	9.1	0.5	35.2
1971	0.7	25.5	9.4	0.6	35.5
1972	0.6	25.5	9.8	0.8	36.1
1973	0.4	24.4	10.2	0.9	35.6
1974	0.4	25.0	10.6	1.0	36.6
1975	0.4	25.5	11.0	1.1	37.6
1976	0.4	26.1	11.6	1.1	38.8
1977	0.5	26.6	12.0	1.2	39.8
1978	0.4	30.5	12.3	1.0	43.9
1979	0.5	31.7	13.1	1.1	45.9
1980	0.5	21.6	9.2	0.6	31.4
1981	0.5	21.9	9.4	0.6	31.9
1982	0.5	22.2	9.6	0.6	32.4
1983	0.5	22.5	9.9	0.6	33.0
1984	0.6	21.9	13.6	0.7	36.1
1985	0.6	22.1	14.8	0.7	37.6
1986	0.6	22.3	15.9	0.7	39.0
1987	0.7	22.6	17.0	0.8	40.4
1988	0.7	22.8	18.3	0.8	41.9
1989	0.7	23.0	19.6	0.8	43.5
1990	0.8	23.2	21.0	0.9	45.1
1991	0.8	23.3	22.4	0.9	46.5
1992	0.8	23.5	24.0	0.9	48.4
1993	0.9	23.6	26.0	1.0	50.5
1994	0.9	23.8	28.1	1.0	52.8
1995	0.9	24.0	30.3	1.1	55.4
1996	0.9	22.0	33.3	1.1	56.5
1997	0.9	22.1	34.5	1.2	57.7
1998	0.8	22.2	33.5	1.1	56.8
1999	0.9	22.2	33.8	1.1	57.2
2000	0.9	22.3	34.1	1.1	57.5
2001	0.9	22.4	34.4	1.1	57.9
2002	1.0	22.5	36.9	1.2	60.6
2003	1.0	22.6	39.6	1.3	63.4
2004	1.1	22.6	42.5	1.3	66.4
2005	1.1	22.7	45.6	1.4	69.7
2006	1.2	22.8	48.9	1.5	73.2
2007	1.2	22.9	52.5	1.6	76.9
2008	1.3	22.9	56.4	1.6	80.9
2009	1.3	23.0	60.6	1.7	85.3
2010	1.3	23.1	65.0	1.8	89.9

Source: Compiled by Earth Policy Institute from U.N. Food and Agriculture Organization, *FAOSTAT*, electronic database, at [faostat.fao.org](http://faostat.fao.org), updated 23 February 2012.

This is part of a supporting dataset for Lester R. Brown, **Full Planet, Empty Plates: The New Geopolitics of Food Scarcity** (New York: W.W. Norton & Company, 2012). For more information, see Earth Policy Institute on-line at [www.earth-policy.org](http://www.earth-policy.org).

# Grazing Livestock in Bangladesh, 1961-2010



Source: FAO

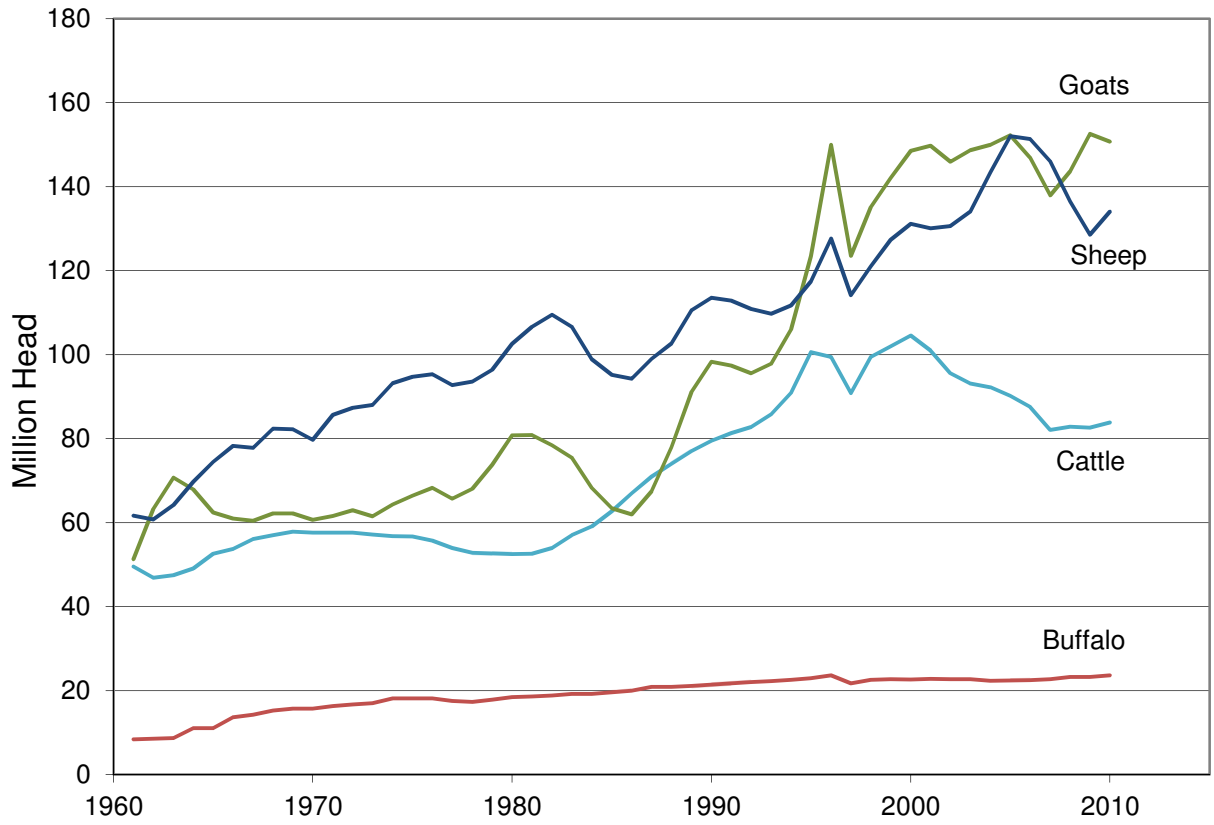
### Grazing Livestock in China, 1961-2010

Year	Buffalo	Cattle	Goats	Sheep	Total
	Million Head				
1961	8.4	49.5	51.3	61.6	170.8
1962	8.6	46.9	63.3	60.8	179.4
1963	8.7	47.5	70.7	64.1	190.9
1964	11.0	49.1	67.9	69.7	197.7
1965	11.0	52.5	62.4	74.5	200.4
1966	13.7	53.7	60.9	78.3	206.5
1967	14.3	56.1	60.5	77.8	208.6
1968	15.2	57.0	62.2	82.3	216.7
1969	15.7	57.8	62.2	82.2	217.9
1970	15.7	57.6	60.7	79.7	213.7
1971	16.3	57.6	61.6	85.6	221.1
1972	16.7	57.6	63.0	87.3	224.5
1973	17.0	57.1	61.5	88.0	223.6
1974	18.1	56.8	64.3	93.2	232.4
1975	18.1	56.7	66.4	94.7	235.9
1976	18.1	55.7	68.2	95.3	237.4
1977	17.6	54.0	65.7	92.7	229.9
1978	17.3	52.8	68.0	93.5	231.7
1979	17.8	52.6	73.7	96.4	240.6
1980	18.4	52.5	80.8	102.6	254.3
1981	18.6	52.6	80.9	106.6	258.7
1982	18.8	53.9	78.4	109.5	260.6
1983	19.2	57.0	75.4	106.6	258.2
1984	19.2	59.0	68.2	98.9	245.4
1985	19.5	62.7	63.4	95.2	240.9
1986	20.0	67.0	61.9	94.2	243.1
1987	20.9	71.0	67.5	99.0	258.3
1988	20.9	74.0	77.9	102.7	275.4
1989	21.1	77.0	91.2	110.6	299.9
1990	21.4	79.5	98.3	113.5	312.7
1991	21.7	81.3	97.4	112.8	313.2
1992	22.0	82.7	95.5	110.9	311.1
1993	22.2	85.8	97.8	109.7	315.5
1994	22.6	90.9	106.0	111.7	331.1
1995	22.9	100.6	123.4	117.4	364.3
1996	23.6	99.5	149.9	127.6	400.6
1997	21.7	90.8	123.5	114.1	350.2
1998	22.6	99.4	135.1	121.0	378.1
1999	22.7	101.9	142.0	127.4	394.0
2000	22.6	104.6	148.5	131.1	406.7
2001	22.8	100.9	149.7	130.0	403.5
2002	22.7	95.6	145.9	130.6	394.7
2003	22.7	93.1	148.7	134.0	398.5
2004	22.3	92.2	149.9	143.4	407.8
2005	22.4	90.1	152.2	152.0	416.8
2006	22.5	87.5	146.9	151.3	408.2
2007	22.7	82.1	137.9	146.0	388.7
2008	23.3	82.8	143.6	136.4	386.1
2009	23.3	82.6	152.5	128.6	387.0
2010	23.6	83.8	150.7	134.0	392.1

Source: Compiled by Earth Policy Institute from U.N. Food and Agriculture Organization, *FAOSTAT*, electronic database, at [faostat.fao.org](http://faostat.fao.org), updated 23 February 2012.

This is part of a supporting dataset for Lester R. Brown, **Full Planet, Empty Plates: The New Geopolitics of Food Scarcity** (New York: W.W. Norton & Company, 2012). For more information, see Earth Policy Institute on-line at [www.earth-policy.org](http://www.earth-policy.org).

# Grazing Livestock in China, 1961-2010



Source: FAO

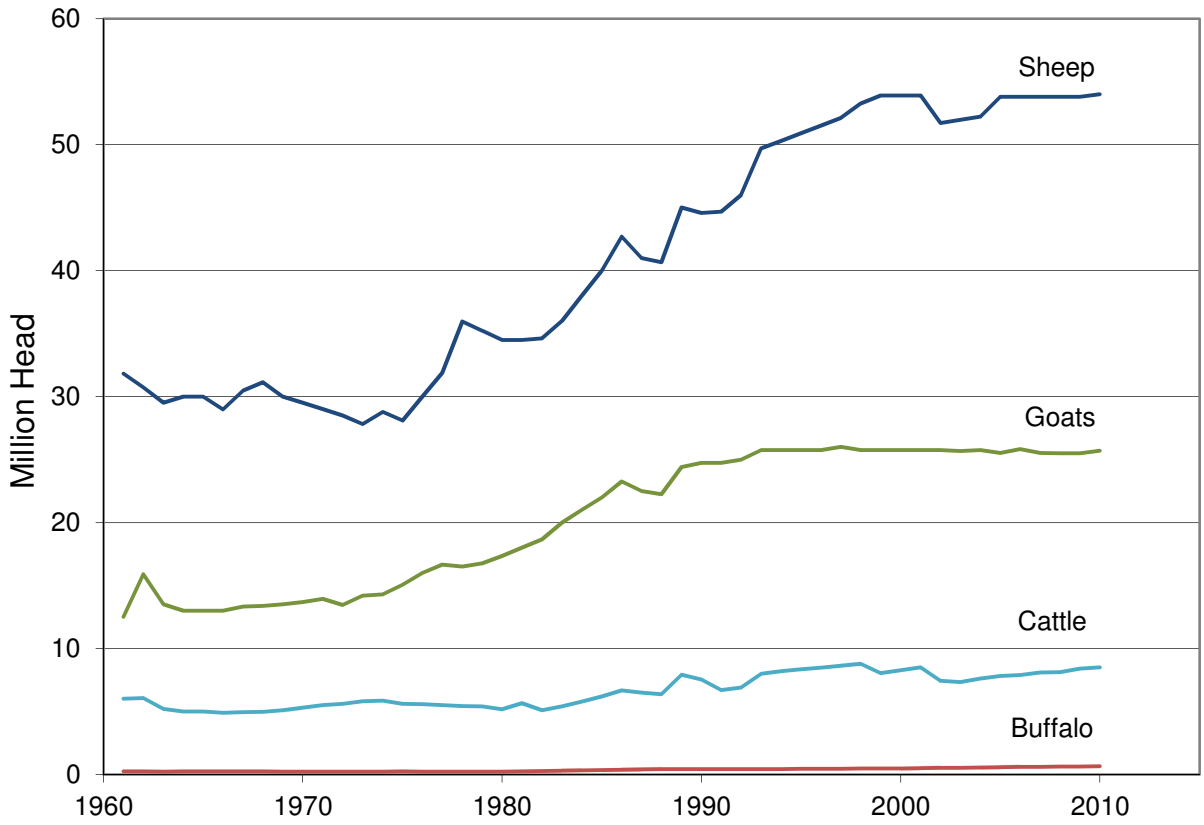
### Grazing Livestock in Iran, 1961-2010

Year	Buffalo	Cattle	Goats	Sheep	Total
	Million Head				
1961	0.2	6.0	12.5	31.8	50.6
1962	0.3	6.1	15.9	30.7	52.9
1963	0.2	5.2	13.5	29.5	48.4
1964	0.3	5.0	13.0	30.0	48.3
1965	0.3	5.0	13.0	30.0	48.3
1966	0.3	4.9	13.0	29.0	47.1
1967	0.3	4.9	13.3	30.5	49.0
1968	0.3	5.0	13.4	31.1	49.7
1969	0.2	5.1	13.5	30.0	48.8
1970	0.2	5.3	13.7	29.5	48.7
1971	0.2	5.5	14.0	29.0	48.7
1972	0.2	5.6	13.5	28.5	47.8
1973	0.2	5.8	14.2	27.8	48.1
1974	0.2	5.9	14.3	28.8	49.2
1975	0.2	5.6	15.1	28.1	49.0
1976	0.2	5.6	16.0	30.0	51.8
1977	0.2	5.5	16.7	31.9	54.3
1978	0.2	5.4	16.5	36.0	58.1
1979	0.2	5.4	16.8	35.2	57.6
1980	0.2	5.2	17.4	34.5	57.3
1981	0.3	5.7	18.0	34.5	58.4
1982	0.3	5.1	18.7	34.6	58.7
1983	0.3	5.4	20.0	36.0	61.7
1984	0.3	5.8	21.0	38.0	65.1
1985	0.4	6.2	22.0	40.0	68.6
1986	0.4	6.7	23.3	42.7	73.0
1987	0.4	6.5	22.5	41.0	70.4
1988	0.4	6.4	22.2	40.7	69.7
1989	0.4	7.9	24.4	45.0	77.8
1990	0.4	7.5	24.7	44.6	77.3
1991	0.4	6.7	24.7	44.7	76.6
1992	0.4	6.9	25.0	46.0	78.3
1993	0.4	8.0	25.8	49.7	83.9
1994	0.4	8.2	25.8	50.3	84.7
1995	0.4	8.3	25.8	50.9	85.4
1996	0.5	8.5	25.8	51.5	86.2
1997	0.5	8.6	26.0	52.1	87.2
1998	0.5	8.8	25.8	53.2	88.3
1999	0.5	8.0	25.8	53.9	88.2
2000	0.5	8.3	25.8	53.9	88.4
2001	0.5	8.5	25.8	53.9	88.7
2002	0.5	7.4	25.8	51.7	85.4
2003	0.5	7.3	25.7	52.0	85.5
2004	0.6	7.6	25.8	52.2	86.2
2005	0.6	7.8	25.5	53.8	87.7
2006	0.6	7.9	25.8	53.8	88.1
2007	0.6	8.1	25.5	53.8	88.1
2008	0.6	8.1	25.5	53.8	88.1
2009	0.6	8.4	25.5	53.8	88.3
2010	0.7	8.5	25.7	54.0	88.9

Source: Compiled by Earth Policy Institute from U.N. Food and Agriculture Organization, *FAOSTAT*, electronic database, at [faostat.fao.org](http://faostat.fao.org), updated 23 February 2012.

This is part of a supporting dataset for Lester R. Brown, **Full Planet, Empty Plates: The New Geopolitics of Food Scarcity** (New York: W.W. Norton & Company, 2012). For more information, see Earth Policy Institute on-line at [www.earth-policy.org](http://www.earth-policy.org).

### Grazing Livestock in Iran, 1961-2010



Source: FAO

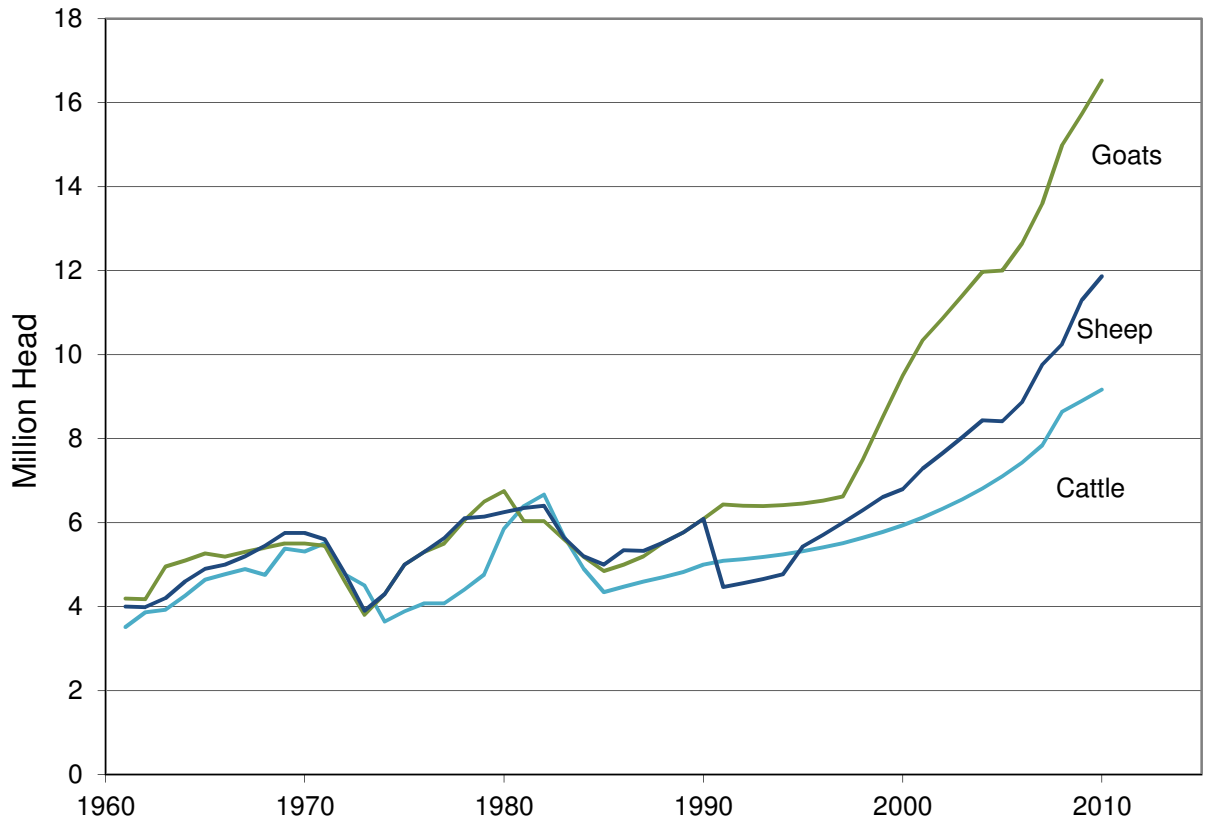
### Grazing Livestock in Mali, 1961-2010

Year	Cattle	Goats	Sheep	Total
	Million Head			
1961	3.5	4.2	4.0	11.7
1962	3.9	4.2	4.0	12.0
1963	3.9	5.0	4.2	13.1
1964	4.3	5.1	4.6	14.0
1965	4.6	5.3	4.9	14.8
1966	4.8	5.2	5.0	15.0
1967	4.9	5.3	5.2	15.4
1968	4.8	5.4	5.5	15.6
1969	5.4	5.5	5.8	16.6
1970	5.3	5.5	5.8	16.6
1971	5.5	5.5	5.6	16.6
1972	4.8	4.6	4.8	14.2
1973	4.5	3.8	3.9	12.2
1974	3.6	4.3	4.3	12.2
1975	3.9	5.0	5.0	13.9
1976	4.1	5.3	5.3	14.7
1977	4.1	5.5	5.6	15.2
1978	4.4	6.1	6.1	16.6
1979	4.8	6.5	6.1	17.4
1980	5.9	6.8	6.3	18.9
1981	6.4	6.0	6.4	18.8
1982	6.7	6.0	6.4	19.1
1983	5.7	5.6	5.6	16.9
1984	4.9	5.2	5.2	15.3
1985	4.3	4.8	5.0	14.2
1986	4.5	5.0	5.3	14.8
1987	4.6	5.2	5.3	15.1
1988	4.7	5.5	5.5	15.8
1989	4.8	5.8	5.8	16.4
1990	5.0	6.1	6.1	17.2
1991	5.1	6.4	4.5	16.0
1992	5.1	6.4	4.6	16.1
1993	5.2	6.4	4.7	16.2
1994	5.2	6.4	4.8	16.4
1995	5.3	6.5	5.4	17.2
1996	5.4	6.5	5.7	17.6
1997	5.5	6.6	6.0	18.1
1998	5.6	7.5	6.3	19.4
1999	5.8	8.5	6.6	20.9
2000	5.9	9.5	6.8	22.2
2001	6.1	10.3	7.3	23.7
2002	6.3	10.9	7.6	24.8
2003	6.6	11.4	8.0	26.0
2004	6.8	12.0	8.4	27.2
2005	7.1	12.0	8.4	27.5
2006	7.4	12.6	8.9	28.9
2007	7.8	13.6	9.8	31.2
2008	8.6	15.0	10.2	33.9
2009	8.9	15.7	11.3	35.9
2010	9.2	16.5	11.9	37.6

Source: Compiled by Earth Policy Institute from U.N. Food and Agriculture Organization, *FAOSTAT*, electronic database, at [faostat.fao.org](http://faostat.fao.org), updated 23 February 2012.

This is part of a supporting dataset for Lester R. Brown, **Full Planet, Empty Plates: The New Geopolitics of Food Scarcity** (New York: W.W. Norton & Company, 2012). For more information, see Earth Policy Institute on-line at [www.earth-policy.org](http://www.earth-policy.org).

# Grazing Livestock in Mali, 1961-2010



Source: FAO



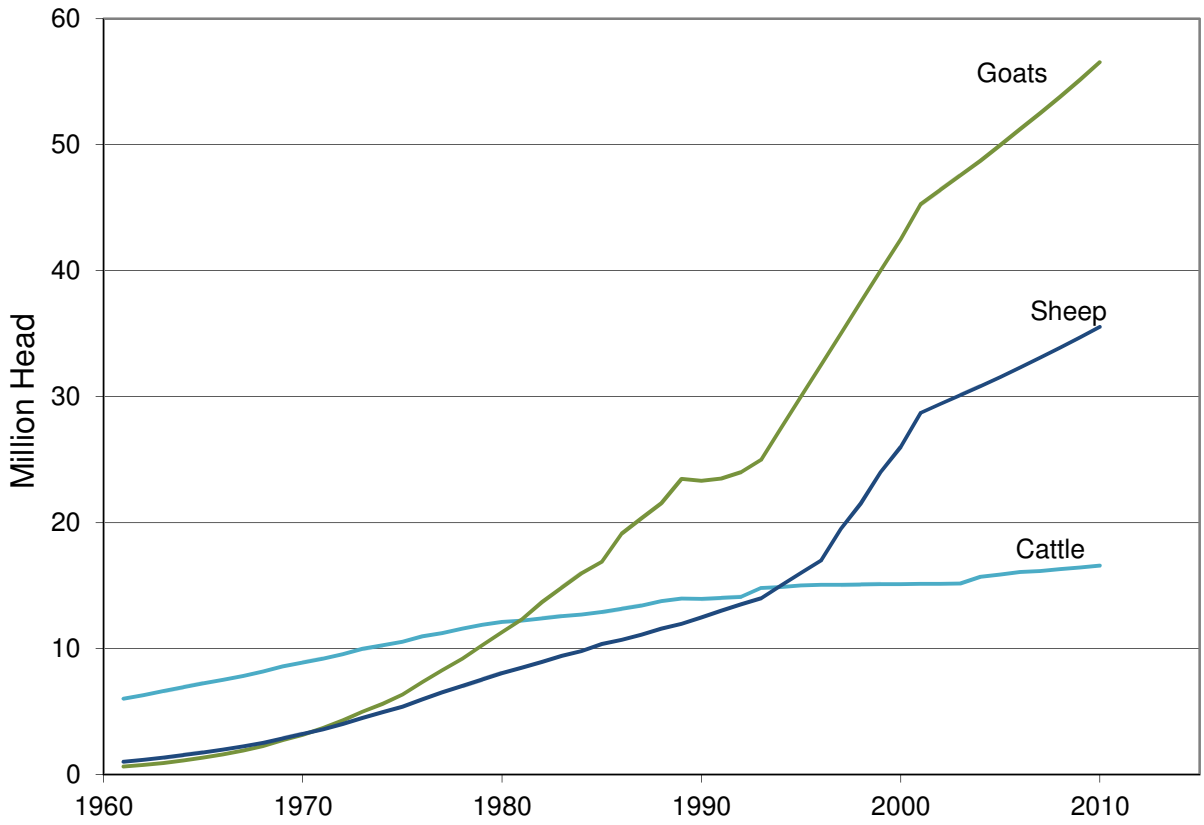
### Grazing Livestock in Nigeria, 1961-2010

Year	Cattle	Goats	Sheep	Total
	Million Head			
1961	6.0	0.6	1.0	7.7
1962	6.3	0.8	1.2	8.2
1963	6.6	0.9	1.3	8.9
1964	6.9	1.1	1.5	9.6
1965	7.2	1.3	1.8	10.3
1966	7.5	1.6	2.0	11.1
1967	7.8	1.9	2.2	12.0
1968	8.2	2.3	2.5	13.0
1969	8.6	2.7	2.9	14.2
1970	8.9	3.2	3.2	15.3
1971	9.2	3.7	3.6	16.5
1972	9.6	4.3	4.0	17.9
1973	10.0	5.0	4.5	19.4
1974	10.3	5.6	4.9	20.8
1975	10.5	6.3	5.4	22.3
1976	11.0	7.3	6.0	24.3
1977	11.2	8.3	6.5	26.0
1978	11.6	9.2	7.0	27.8
1979	11.9	10.3	7.5	29.7
1980	12.1	11.3	8.1	31.5
1981	12.2	12.3	8.5	33.0
1982	12.4	13.7	8.9	35.0
1983	12.6	14.8	9.4	36.8
1984	12.7	16.0	9.8	38.5
1985	12.9	16.9	10.4	40.2
1986	13.2	19.1	10.7	43.0
1987	13.4	20.3	11.1	44.9
1988	13.8	21.5	11.6	46.9
1989	14.0	23.5	12.0	49.4
1990	13.9	23.3	12.5	49.7
1991	14.0	23.5	13.0	50.5
1992	14.1	24.0	13.5	51.6
1993	14.8	25.0	14.0	53.8
1994	14.9	27.5	15.0	57.4
1995	15.0	30.0	16.0	61.0
1996	15.1	32.5	17.0	64.6
1997	15.1	35.0	19.5	69.6
1998	15.1	37.5	21.5	74.1
1999	15.1	40.0	24.0	79.1
2000	15.1	42.5	26.0	83.6
2001	15.1	45.3	28.7	89.1
2002	15.1	46.4	29.4	90.9
2003	15.2	47.6	30.1	92.8
2004	15.7	48.7	30.8	95.2
2005	15.9	50.0	31.5	97.4
2006	16.1	51.2	32.3	99.6
2007	16.2	52.5	33.1	101.7
2008	16.3	53.8	33.9	104.0
2009	16.4	55.1	34.7	106.3
2010	16.6	56.5	35.5	108.6

Source: Compiled by Earth Policy Institute from U.N. Food and Agriculture Organization, *FAOSTAT*, electronic database, at [faostat.fao.org](http://faostat.fao.org), updated 23 February 2012.

This is part of a supporting dataset for Lester R. Brown, **Full Planet, Empty Plates: The New Geopolitics of Food Scarcity** (New York: W.W. Norton & Company, 2012). For more information, see Earth Policy Institute on-line at [www.earth-policy.org](http://www.earth-policy.org).

# Grazing Livestock in Nigeria, 1961-2010



Source: FAO

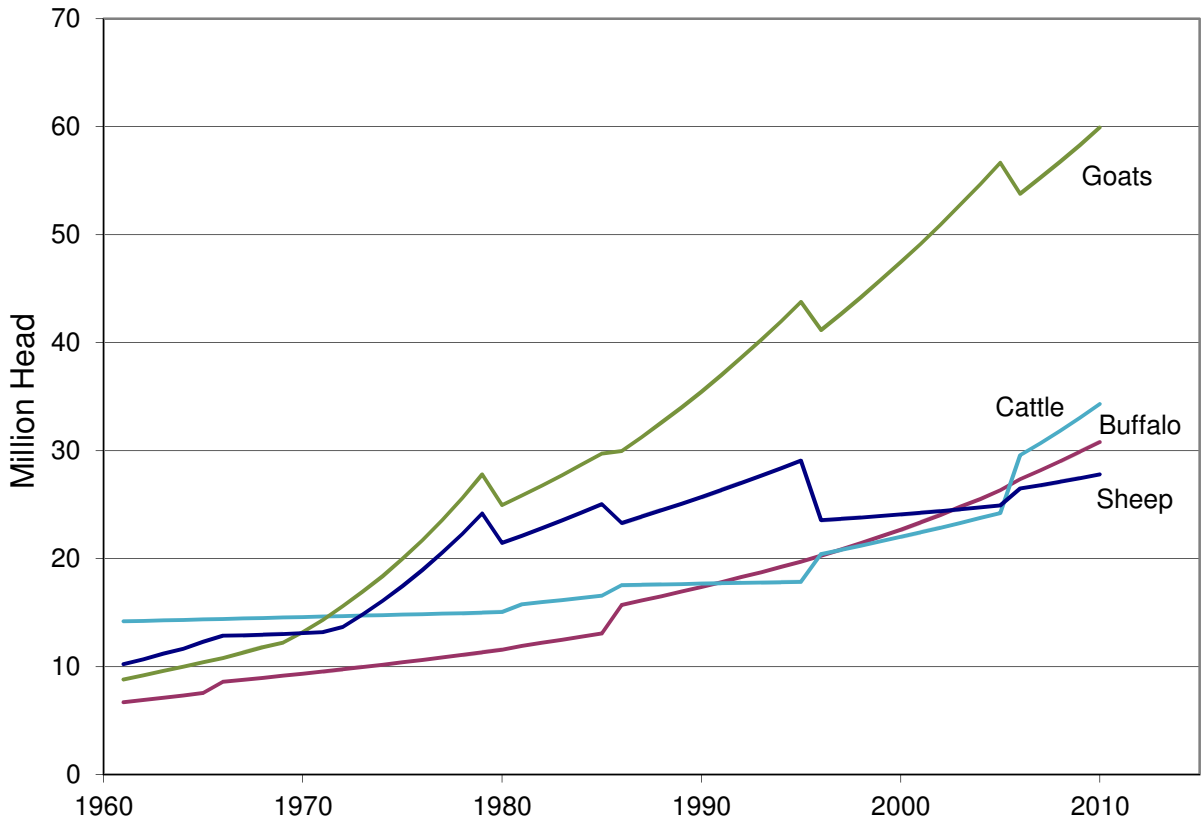
### Grazing Livestock in Pakistan, 1961-2010

Year	Buffalo	Cattle	Goats	Sheep	Total
	Million Head				
1961	6.7	14.2	8.8	10.2	39.9
1962	6.9	14.2	9.2	10.7	41.0
1963	7.1	14.3	9.6	11.2	42.2
1964	7.3	14.3	10.0	11.7	43.3
1965	7.6	14.4	10.4	12.3	44.6
1966	8.6	14.4	10.8	12.9	46.6
1967	8.8	14.4	11.3	12.9	47.4
1968	9.0	14.5	11.8	13.0	48.2
1969	9.2	14.5	12.2	13.0	48.9
1970	9.3	14.6	13.2	13.1	50.2
1971	9.5	14.6	14.3	13.2	51.7
1972	9.8	14.7	15.6	13.7	53.7
1973	10.0	14.7	16.9	14.8	56.4
1974	10.2	14.8	18.4	16.1	59.4
1975	10.4	14.8	20.0	17.5	62.6
1976	10.6	14.9	21.7	18.9	66.1
1977	10.8	14.9	23.6	20.5	69.8
1978	11.1	14.9	25.6	22.3	73.9
1979	11.3	15.0	27.8	24.2	78.3
1980	11.5	15.0	25.0	21.4	73.0
1981	11.9	15.8	25.8	22.1	75.6
1982	12.2	16.0	26.8	22.8	77.7
1983	12.5	16.2	27.7	23.5	79.9
1984	12.8	16.4	28.7	24.3	82.1
1985	13.1	16.5	29.7	25.0	84.4
1986	15.7	17.5	29.9	23.3	86.5
1987	16.1	17.6	31.2	23.9	88.8
1988	16.5	17.6	32.6	24.5	91.2
1989	16.9	17.6	34.0	25.1	93.6
1990	17.4	17.7	35.4	25.7	96.2
1991	17.8	17.7	37.0	26.3	98.8
1992	18.3	17.7	38.6	27.0	101.6
1993	18.7	17.8	40.2	27.7	104.4
1994	19.2	17.8	42.0	28.4	107.3
1995	19.7	17.8	43.8	29.1	110.4
1996	20.3	20.4	41.2	23.5	105.4
1997	20.8	20.8	42.7	23.7	108.0
1998	21.4	21.2	44.2	23.8	110.6
1999	22.0	21.6	45.8	23.9	113.3
2000	22.7	22.0	47.4	24.1	116.2
2001	23.3	22.4	49.1	24.2	119.1
2002	24.0	22.9	50.9	24.4	122.2
2003	24.8	23.3	52.8	24.6	125.4
2004	25.5	23.8	54.7	24.7	128.7
2005	26.3	24.2	56.7	24.9	132.1
2006	27.3	29.6	53.8	26.5	137.2
2007	28.1	30.7	55.2	26.8	140.9
2008	29.0	31.8	56.7	27.1	144.7
2009	29.9	33.0	58.3	27.4	148.6
2010	30.8	34.3	59.9	27.8	152.8

Source: Compiled by Earth Policy Institute from U.N. Food and Agriculture Organization, *FAOSTAT*, electronic database, at [faostat.fao.org](http://faostat.fao.org), updated 23 February 2012.

This is part of a supporting dataset for Lester R. Brown, **Full Planet, Empty Plates: The New Geopolitics of Food Scarcity** (New York: W.W. Norton & Company, 2012). For more information, see Earth Policy Institute on-line at [www.earth-policy.org](http://www.earth-policy.org).

# Grazing Livestock in Pakistan, 1961-2010



Source: FAO

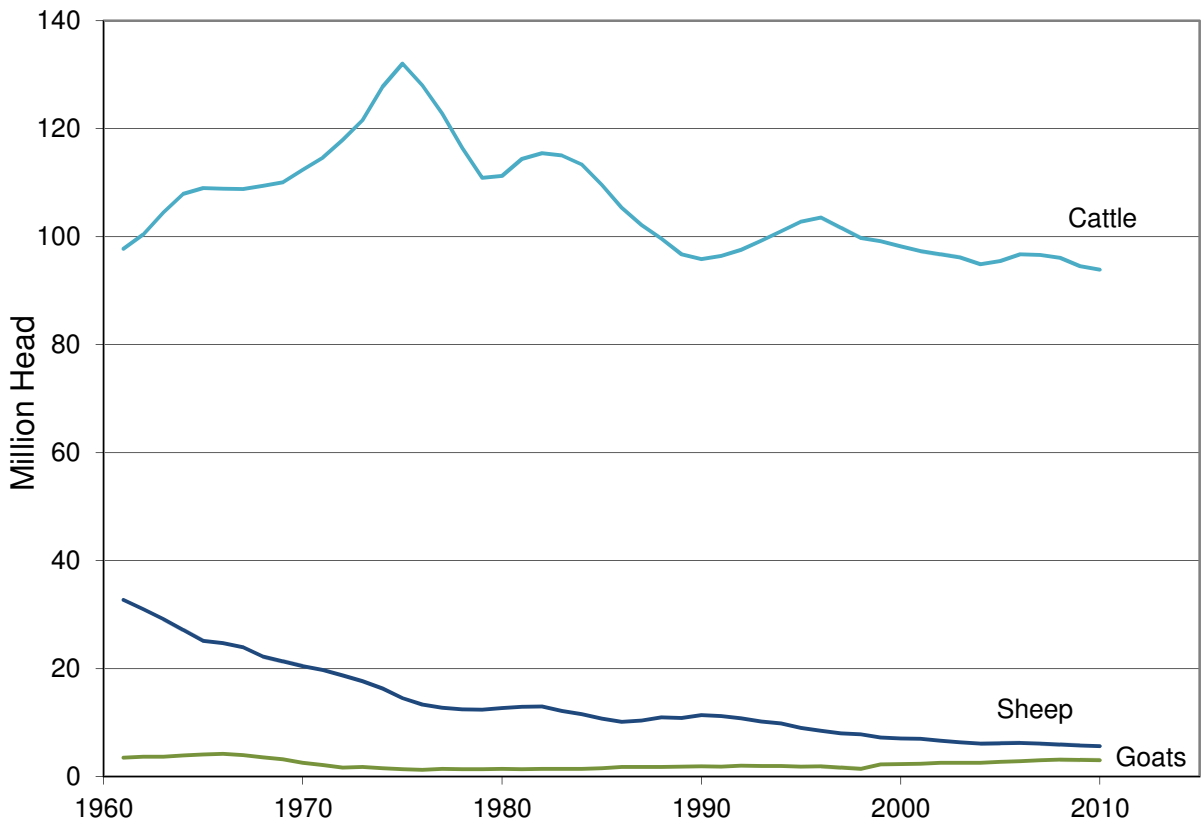
### Grazing Livestock in the United States, 1961-2010

Year	Cattle	Goats	Sheep	Total
	Million Head			
1961	97.7	3.5	32.7	133.9
1962	100.4	3.6	31.0	135.0
1963	104.5	3.7	29.2	137.3
1964	107.9	3.9	27.1	138.9
1965	109.0	4.1	25.1	138.2
1966	108.9	4.2	24.7	137.8
1967	108.8	4.0	24.0	136.7
1968	109.4	3.6	22.2	135.2
1969	110.0	3.2	21.4	134.6
1970	112.4	2.6	20.4	135.4
1971	114.6	2.1	19.7	136.4
1972	117.9	1.7	18.7	138.3
1973	121.5	1.8	17.6	141.0
1974	127.8	1.6	16.3	145.7
1975	132.0	1.4	14.5	147.9
1976	128.0	1.3	13.3	142.6
1977	122.8	1.4	12.7	136.9
1978	116.4	1.4	12.4	130.2
1979	110.9	1.4	12.4	124.6
1980	111.2	1.4	12.7	125.3
1981	114.4	1.4	12.9	128.7
1982	115.4	1.4	13.0	129.9
1983	115.0	1.4	12.1	128.6
1984	113.4	1.4	11.6	126.3
1985	109.6	1.6	10.7	121.8
1986	105.4	1.8	10.1	117.3
1987	102.1	1.8	10.4	114.3
1988	99.6	1.8	10.9	112.4
1989	96.7	1.9	10.9	109.4
1990	95.8	1.9	11.4	109.1
1991	96.4	1.8	11.2	109.4
1992	97.6	2.0	10.8	110.4
1993	99.2	2.0	10.2	111.3
1994	101.0	2.0	9.8	112.8
1995	102.8	1.9	9.0	113.6
1996	103.5	1.9	8.5	113.9
1997	101.7	1.7	8.0	111.3
1998	99.7	1.4	7.8	109.0
1999	99.1	2.3	7.2	108.6
2000	98.2	2.3	7.0	107.5
2001	97.3	2.4	7.0	106.6
2002	96.7	2.5	6.6	105.9
2003	96.1	2.5	6.3	105.0
2004	94.9	2.5	6.1	103.5
2005	95.4	2.7	6.1	104.3
2006	96.7	2.8	6.2	105.8
2007	96.6	3.0	6.1	105.7
2008	96.0	3.1	6.0	105.1
2009	94.5	3.1	5.7	103.3
2010	93.9	3.0	5.6	102.5

Source: Compiled by Earth Policy Institute from U.N. Food and Agriculture Organization, *FAOSTAT*, electronic database, at [faostat.fao.org](http://faostat.fao.org), updated 23 February 2012.

This is part of a supporting dataset for Lester R. Brown, **Full Planet, Empty Plates: The New Geopolitics of Food Scarcity** (New York: W.W. Norton & Company, 2012). For more information, see Earth Policy Institute on-line at [www.earth-policy.org](http://www.earth-policy.org).

# Grazing Livestock in the United States, 1961-2010



Source: FAO

### Livestock and Human Populations in Africa, 1961-2010

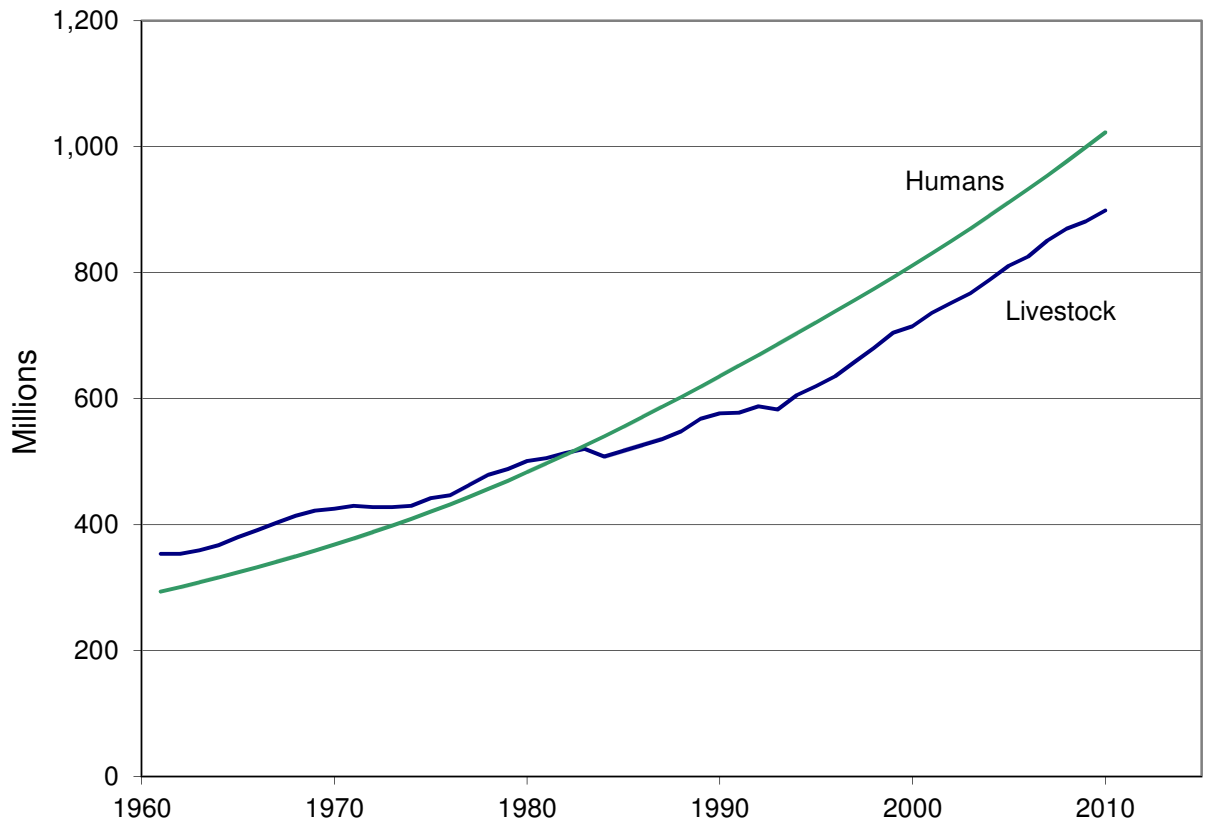
Year	Livestock Population Millions	Human Population
1961	353	294
1962	354	301
1963	359	308
1964	367	316
1965	380	324
1966	391	332
1967	403	341
1968	414	350
1969	422	359
1970	425	368
1971	430	378
1972	428	388
1973	428	398
1974	430	409
1975	442	420
1976	447	432
1977	463	444
1978	479	457
1979	488	469
1980	501	483
1981	505	497
1982	513	511
1983	520	525
1984	508	540
1985	517	555
1986	526	571
1987	535	586
1988	548	603
1989	568	619
1990	577	635
1991	577	652
1992	588	669
1993	582	686
1994	605	703
1995	620	721
1996	636	738
1997	658	756
1998	680	774
1999	705	792
2000	715	811
2001	736	830
2002	752	850
2003	767	870
2004	788	890
2005	810	911
2006	826	932
2007	851	954
2008	870	976
2009	881	999
2010	898	1,022

Note: Grazing livestock include cattle, sheep, goats, and buffalo.

Source: Compiled by Earth Policy Institute with livestock population from U.N. Food and Agriculture Organization, *FAOSTAT*, electronic database, at [faostat.fao.org](http://faostat.fao.org), updated 23 February 2012; human population from U.N. Population Division, *World Population Prospects: The 2010 Revision*, electronic database, at [esa.un.org/unpd/wpp/index.htm](http://esa.un.org/unpd/wpp/index.htm), updated 3 May 2011.

This is part of a supporting dataset for Lester R. Brown, **Full Planet, Empty Plates: The New Geopolitics of Food Scarcity** (New York: W.W. Norton & Company, 2012). For more information, see Earth Policy Institute on-line at [www.earth-policy.org](http://www.earth-policy.org).

## Livestock and Human Populations in Africa, 1961-2010



Source: FAO; UNPop



### Livestock and Human Populations in Nigeria, 1961-2010

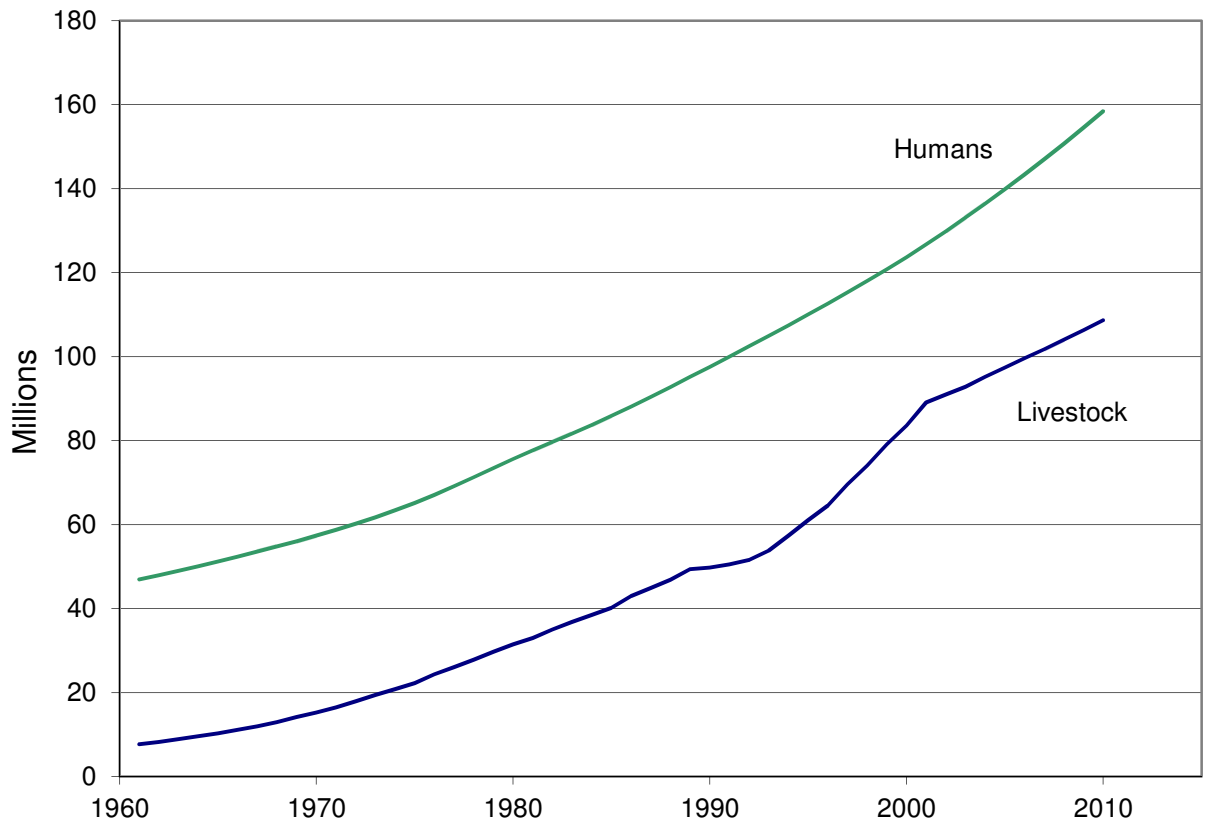
Year	Livestock Population Millions	Human Population
1961	7.7	46.9
1962	8.2	47.9
1963	8.9	49.0
1964	9.6	50.1
1965	10.3	51.2
1966	11.1	52.3
1967	12.0	53.5
1968	13.0	54.7
1969	14.2	56.0
1970	15.3	57.4
1971	16.5	58.7
1972	17.9	60.2
1973	19.4	61.7
1974	20.8	63.4
1975	22.3	65.1
1976	24.3	67.1
1977	26.0	69.1
1978	27.8	71.3
1979	29.7	73.4
1980	31.5	75.5
1981	33.0	77.6
1982	35.0	79.6
1983	36.8	81.6
1984	38.5	83.7
1985	40.2	85.8
1986	43.0	88.1
1987	44.9	90.4
1988	46.9	92.7
1989	49.4	95.1
1990	49.7	97.6
1991	50.5	100.0
1992	51.6	102.4
1993	53.8	104.9
1994	57.4	107.5
1995	61.0	110.0
1996	64.6	112.6
1997	69.6	115.3
1998	74.1	118.0
1999	79.1	120.8
2000	83.6	123.7
2001	89.1	126.7
2002	90.9	129.8
2003	92.8	133.1
2004	95.2	136.4
2005	97.4	139.8
2006	99.6	143.3
2007	101.7	147.0
2008	104.0	150.7
2009	106.3	154.5
2010	108.6	158.4

Note: Grazing livestock include cattle, sheep, goats, and buffalo.

Source: Compiled by Earth Policy Institute with livestock population from U.N. Food and Agriculture Organization, *FAOSTAT*, electronic database, at [faostat.fao.org](http://faostat.fao.org), updated 23 February 2012; human population from U.N. Population Division, *World Population Prospects: The 2010 Revision*, electronic database, at [esa.un.org/unpd/wpp/index.htm](http://esa.un.org/unpd/wpp/index.htm), updated 3 May 2011.

This is part of a supporting dataset for Lester R. Brown, **Full Planet, Empty Plates: The New Geopolitics of Food Scarcity** (New York: W.W. Norton & Company, 2012). For more information, see Earth Policy Institute on-line at [www.earth-policy.org](http://www.earth-policy.org).

## Livestock and Human Populations in Nigeria, 1961-2010



Source: FAO; UNPop

### Livestock and Human Populations in Pakistan, 1961-2010

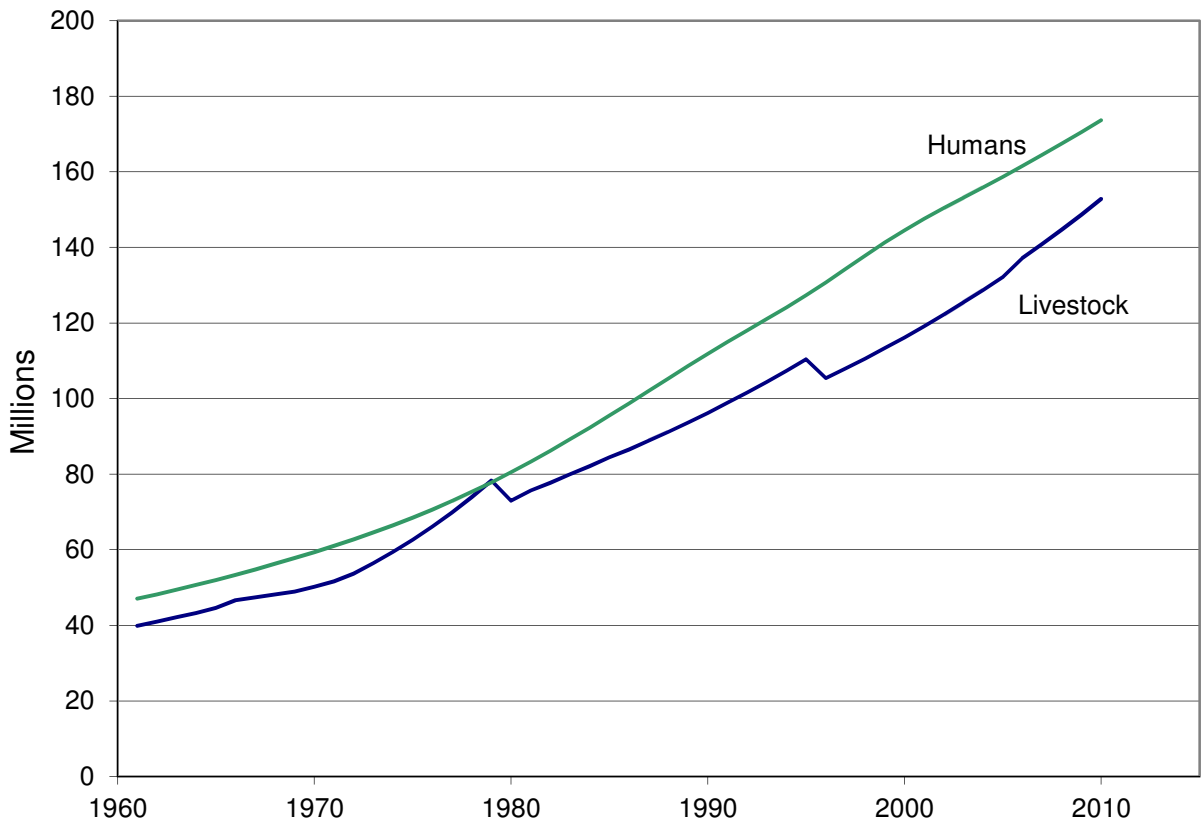
Year	Livestock Population Millions	Human Population
1961	39.9	47.0
1962	41.0	48.2
1963	42.2	49.4
1964	43.3	50.7
1965	44.6	52.0
1966	46.6	53.4
1967	47.4	54.8
1968	48.2	56.3
1969	48.9	57.8
1970	50.2	59.4
1971	51.7	61.0
1972	53.7	62.8
1973	56.4	64.6
1974	59.4	66.5
1975	62.6	68.5
1976	66.1	70.6
1977	69.8	72.9
1978	73.9	75.3
1979	78.3	77.8
1980	73.0	80.5
1981	75.6	83.3
1982	77.7	86.2
1983	79.9	89.2
1984	82.1	92.3
1985	84.4	95.5
1986	86.5	98.7
1987	88.8	102.0
1988	91.2	105.3
1989	93.6	108.6
1990	96.2	111.8
1991	98.8	115.0
1992	101.6	118.0
1993	104.4	121.0
1994	107.3	124.1
1995	110.4	127.3
1996	105.4	130.7
1997	108.0	134.3
1998	110.6	137.8
1999	113.3	141.3
2000	116.2	144.5
2001	119.1	147.6
2002	122.2	150.4
2003	125.4	153.1
2004	128.7	155.9
2005	132.1	158.6
2006	137.2	161.5
2007	140.9	164.4
2008	144.7	167.4
2009	148.6	170.5
2010	152.8	173.6

Note: Grazing livestock include cattle, sheep, goats, and buffalo.

Source: Compiled by Earth Policy Institute with livestock population from U.N. Food and Agriculture Organization, *FAOSTAT*, electronic database, at [faostat.fao.org](http://faostat.fao.org), updated 23 February 2012; human population from U.N. Population Division, *World Population Prospects: The 2010 Revision*, electronic database, at [esa.un.org/unpd/wpp/index.htm](http://esa.un.org/unpd/wpp/index.htm), updated 3 May 2011.

This is part of a supporting dataset for Lester R. Brown, **Full Planet, Empty Plates: The New Geopolitics of Food Scarcity** (New York: W. W. Norton & Company, 2012). For more information, see Earth Policy Institute on-line at [www.earth-policy.org](http://www.earth-policy.org).

# Livestock and Human Populations in Pakistan, 1961-2010



Source: FAO; UNPop